



Metro Tunnel Project update

Residents 3000

February 2024



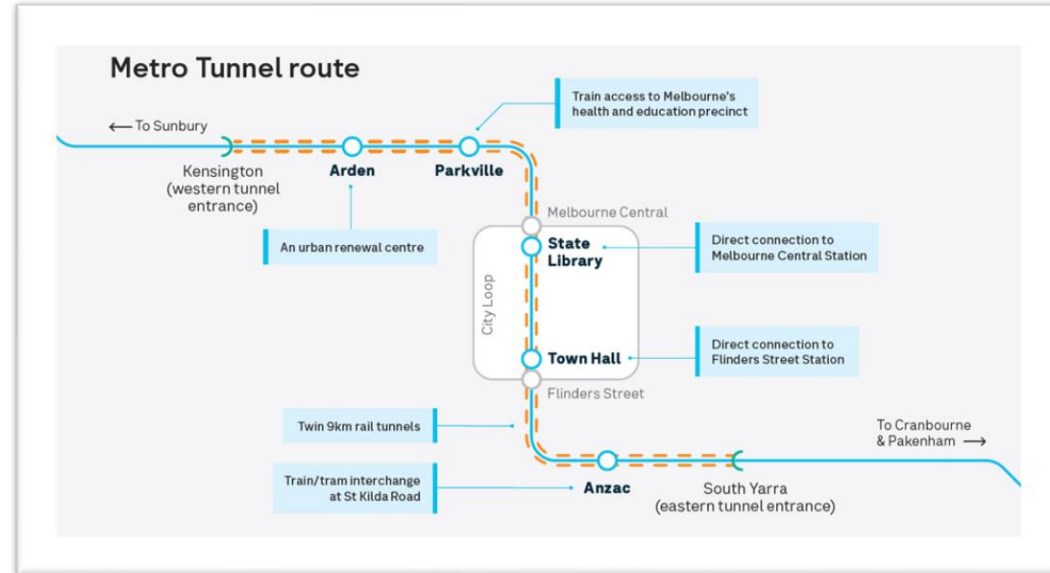
- **Project overview and recent milestones**
Barry McGuren (RPV)
- **State Library Station update**
Melinda Kelly (CYP)
- **Town Hall Station update**
Blythe Chidgey (CYP)
- **Accessibility**
Barry McGuren (RPV)
- **Creative Program**
Barry McGuren (RPV)

Project overview

Barry McGuren
Rail Projects Victoria

What are we building?

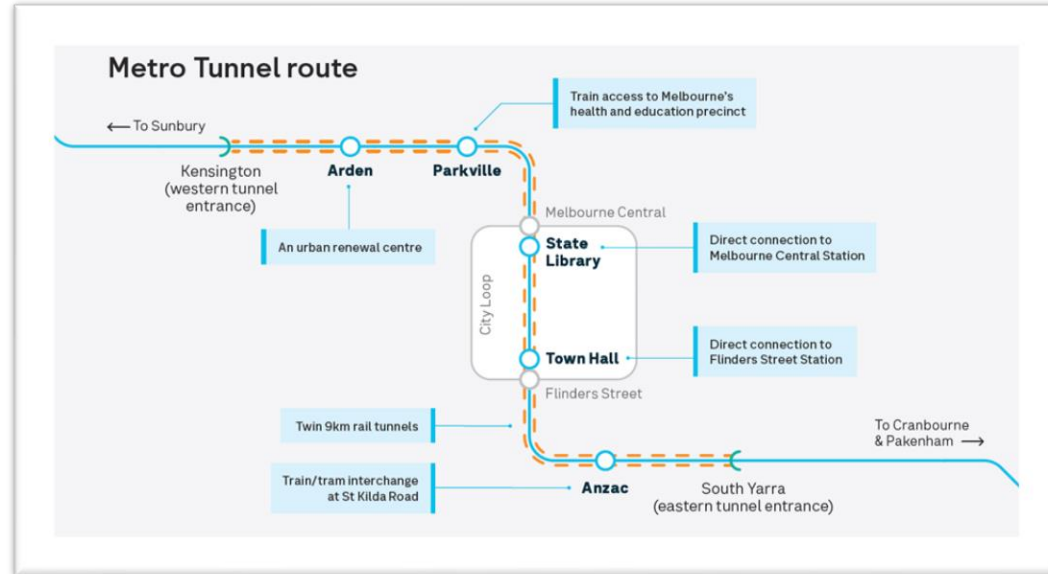
- Biggest upgrade to Melbourne's train network since the City Loop opened in 1981
- 9km rail tunnel through the city creating a new rail line from Sunbury to Cranbourne and Pakenham
- 5 new underground stations (Arden, Parkville, State Library, Town Hall, Anzac) and 2 tunnel entrances (South Yarra and Kensington)
- Modern trains and high capacity signalling infrastructure



Benefits



- Whole-of-network benefit – by moving the 3 busiest lines into a separate tunnel, this will increase capacity for the City Loop to run more services on other lines
- More than half a million additional passengers per week travelling during peak times across Melbourne's train network
- Turn up and go service
- Providing first-time rail services to Melbourne's medical precinct



Opening in 2025 – a year ahead of schedule

What the Metro Tunnel entrances look like

Barry McGuren
Rail Projects Victoria

Eastern entrance – South Yarra



The new tunnel entrance including enhanced Siding Reserve, Lover's Walk, and Williams Street bridge.

- The eastern tunnel entrance connects the Metro Tunnel with the Cranbourne/ Pakenham lines.
- Trains will enter the Metro Tunnel near William Street and pass underneath the Sandringham and Frankston lines, travelling west under Toorak and St Kilda roads to connect with Anzac Station.
- The next stop heading east from the tunnel is Caulfield Station.

Western entrance - Kensington



New bike and walk paths, open park space and refurbished entrance at South Kensington Station.

- The western tunnel entrance connects the Metro Tunnel with the Sunbury Line.
- After entering the Metro Tunnel, trains will pass under Moonee Ponds Creek and CityLink before connecting to Arden Station.
- The next stop heading west from the tunnel is Footscray Station.

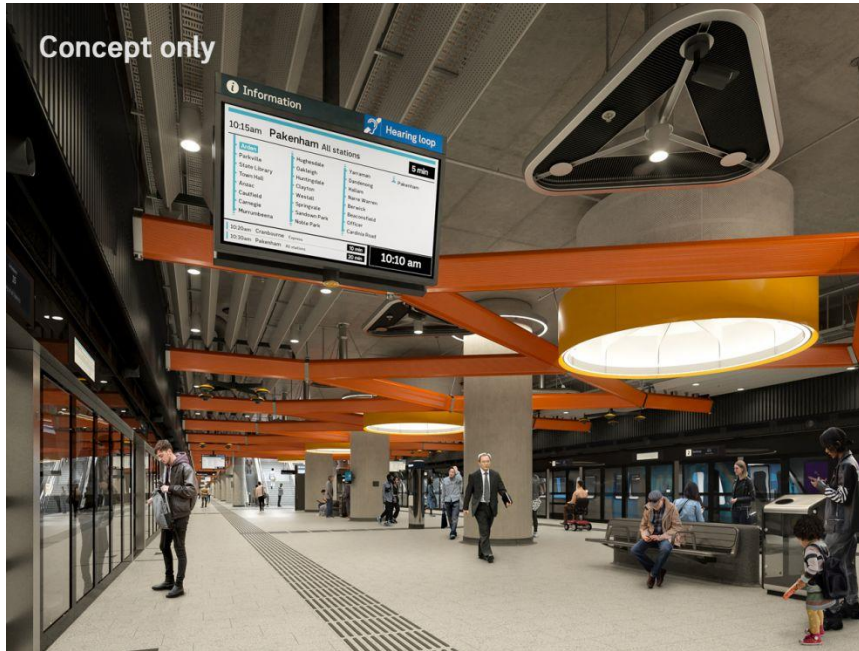


Legacy artwork 'One Day In Our Park' by Stephen Banham.

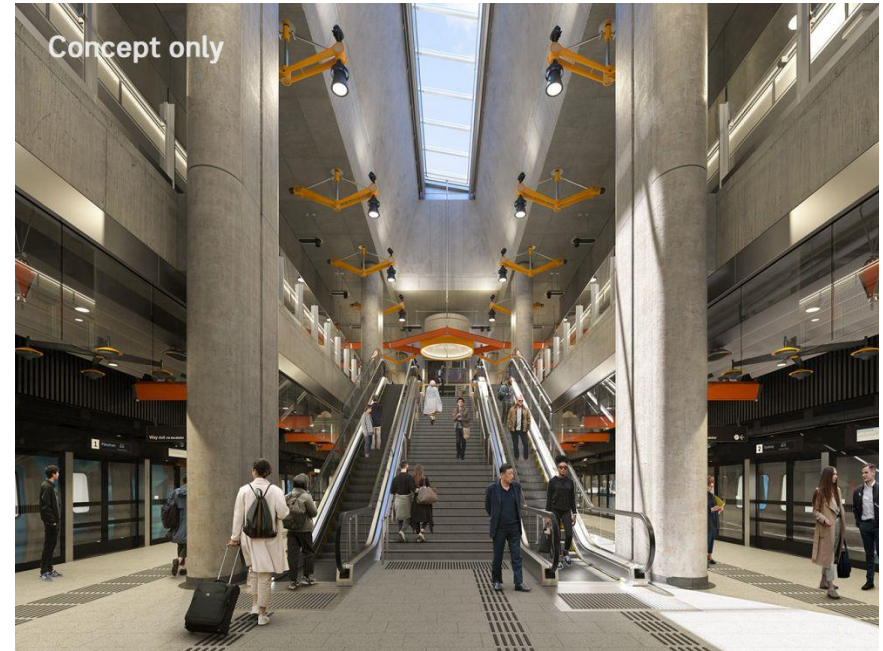
What the stations will look like

Barry McGuren
Rail Projects Victoria

Concept images – Arden Station



Platform level.



Escalators into the platform.

Concept images – Parkville Station



Grattan Street escalator entrance.



Platform level.

Concept images – State Library Station



Main station entrance on the corner of La Trobe/Swanston.



Platform level.

Concept images – Town Hall Station



City Square entrance directly opposite Town Hall.

The underground concourse level from City Square entrance.

Concept images – Town Hall Station



City Square returned as a newly landscaped public space.

Concept images – Lendlease’s ‘Town Hall Place’ development



Lendlease’s ten storey OSD when completed in 2026.



View from Swanston Street including station entrance point.



Ground floor level where public can access escalators down to the station or go up to access further retail or hospitality.

Concept images – Anzac Station



Anzac Station concourse.



The Anzac Station train/tram interchange.



Recent project milestones

Barry McGuren
Rail Projects Victoria

Recent project milestones



- Completed construction at Arden Station – 1 down, 4 to go!



- Ran the very first train through the Metro Tunnel, kicking off a vigorous and complex testing program

Recent project milestones

- Installed platform screen doors at all five stations
- Installed high capacity signalling along the south-eastern and western rail corridors
- Ran the first High Capacity Metro Trains on the Sunbury Line – these trains are now taking passengers in the morning peak



Victorian-first platform screen doors have been installed at each Metro Tunnel station for better safety, climate and noise control.

State Library Station

Melinda Kelly
Cross Yarra Partnership

State Library Station

Main entrance, corner of La Trobe and Swanston



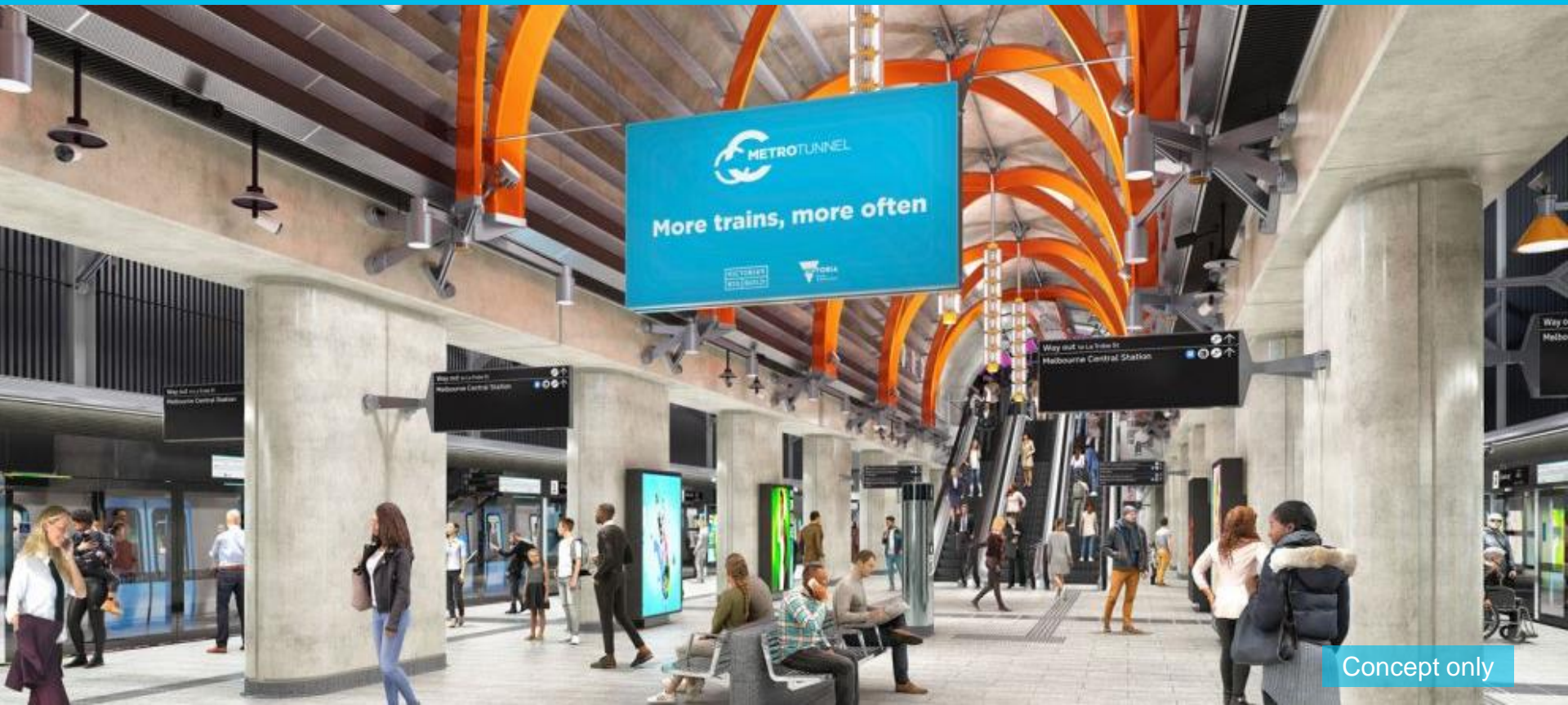
Concept only

State Library Station Concourse



Concept only

State Library Station Platform



Concept only

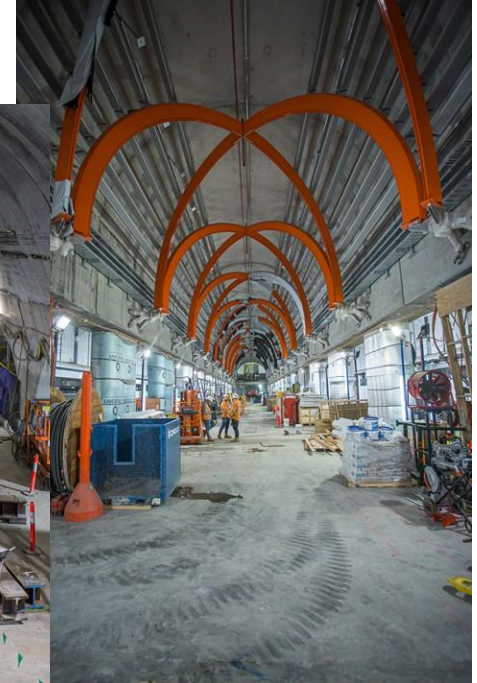
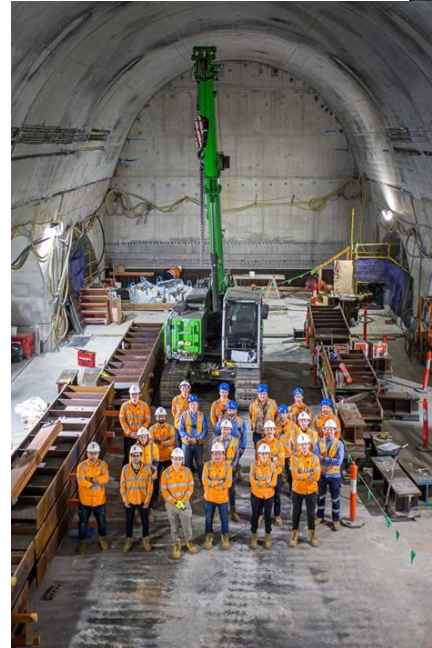
Milestones

State Library Station

2023 milestones



- Started building the main station entrance, including the installation of 12 architectural columns and six overhead beams
- Completed excavation at the La Trobe Street site (82,000 m³ of rock) marking the end of excavation across the entire project
- Above ground structures underway at the Little La Trobe Street site
- Lining of the adits completed
- Architectural fittings and platform screen doors installed
- Escalators installed at Melbourne Central and Franklin Street (fit-out ongoing).



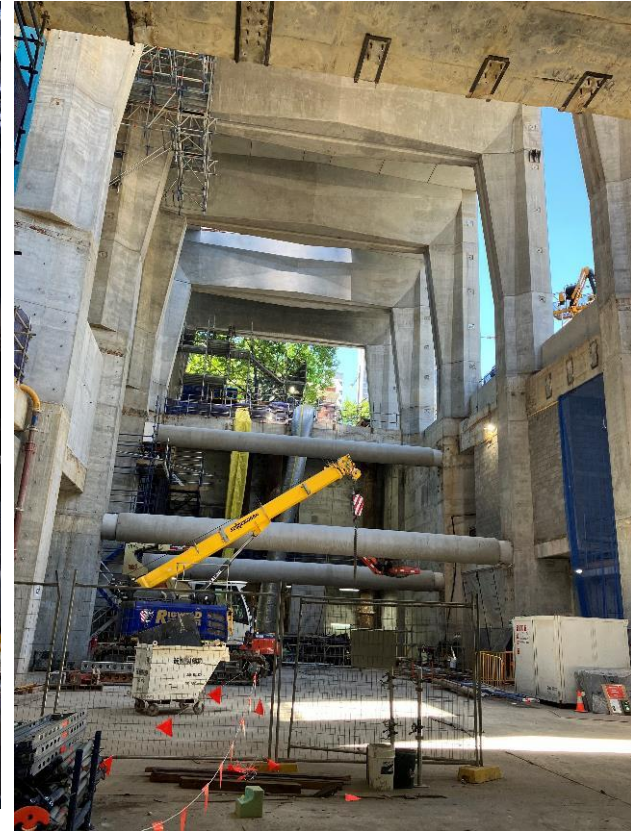
State Library Station

2023 milestones



State Library Station

2023 milestones



State Library Station

2023 milestones



State Library Station

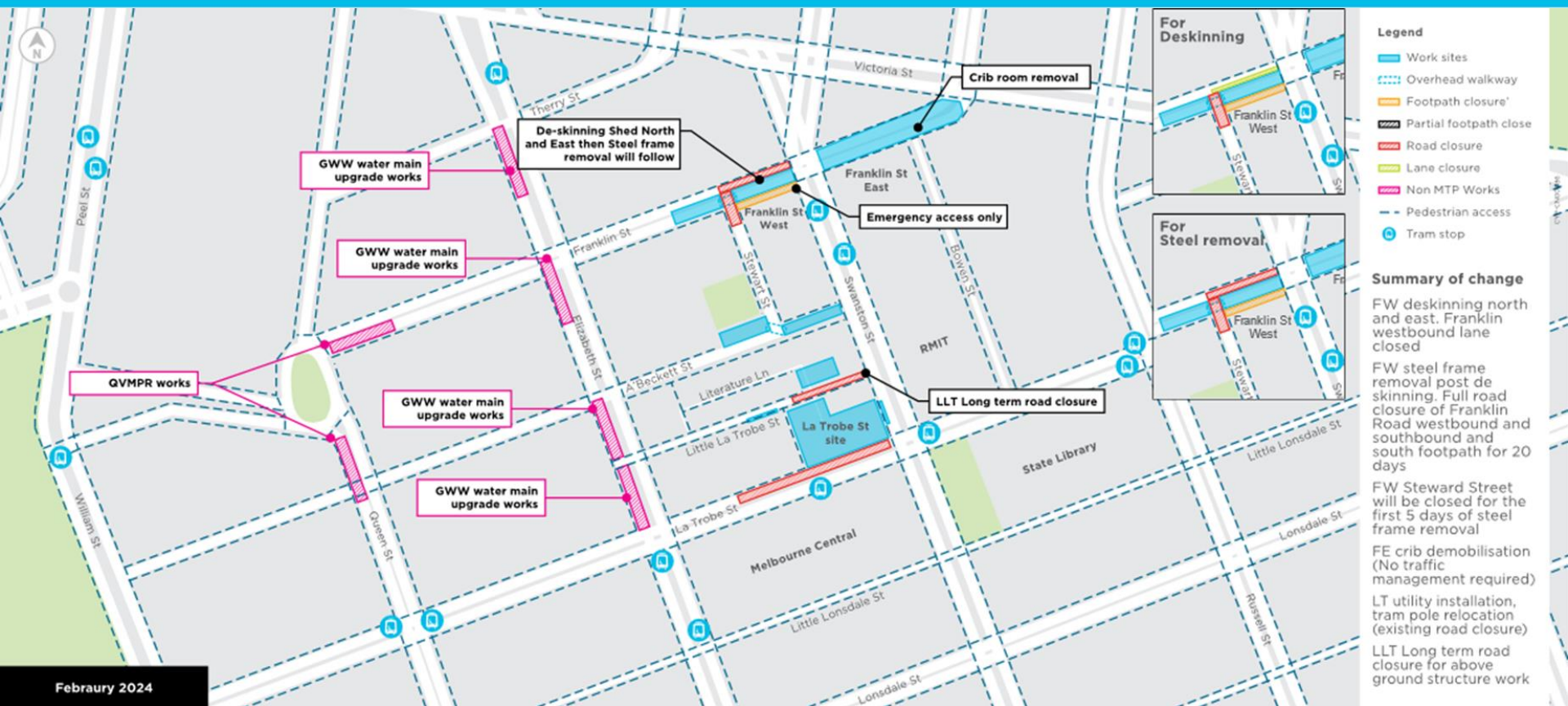
2023 milestones





State Library Station Lookahead

State Library Station Lookahead



- Legend**
- █ Work sites
 - - - Overhead walkway
 - █ Footpath closure
 - █ Partial footpath close
 - █ Road closure
 - █ Lane closure
 - █ Non MTP Works
 - - - Pedestrian access
 - Tram stop

Summary of change

- FW deskinning north and east. Franklin westbound lane closed
- FW steel frame removal post de skinning. Full road closure of Franklin Road westbound and southbound and south footpath for 20 days
- FW Steward Street will be closed for the first 5 days of steel frame removal
- FE crib demobilisation (No traffic management required)
- LT utility installation, tram pole relocation (existing road closure)
- LLT Long term road closure for above ground structure work

State Library Station

Lookahead – public area works



- Demobilisation of the Franklin Street West acoustic shed (pictured) has commenced
- Overhead gantry between the Franklin Street West sites has been removed
- Franklin Street westbound closure is in place (scheduled to reopen mid-2024)
- Franklin Street eastbound closure is in place between 9am and 4pm on weekdays and 7am and 2pm Saturdays
- Stewart Street closure is in place between 7am and 6pm Monday to Saturdays
- Franklin Street East shed demobilisation will commence in March



State Library Station

Lookahead – public area works



- La Trobe Street eastbound between Elizabeth and Swanston Street is currently closed (scheduled to reopen in September)
- A tower crane was demobilised from the La Trobe Street site in early January to facilitate additional above ground structure works and utilities works
- Little La Trobe Street road closure and footpath closure is in place to facilitate a mobile crane on the road for above ground structure works and lifts (scheduled to reopen Saturday 3 February)
- Concrete pumps will be removed from Little La Trobe and Swanston streets and changes to traffic and pedestrian arrangements will apply



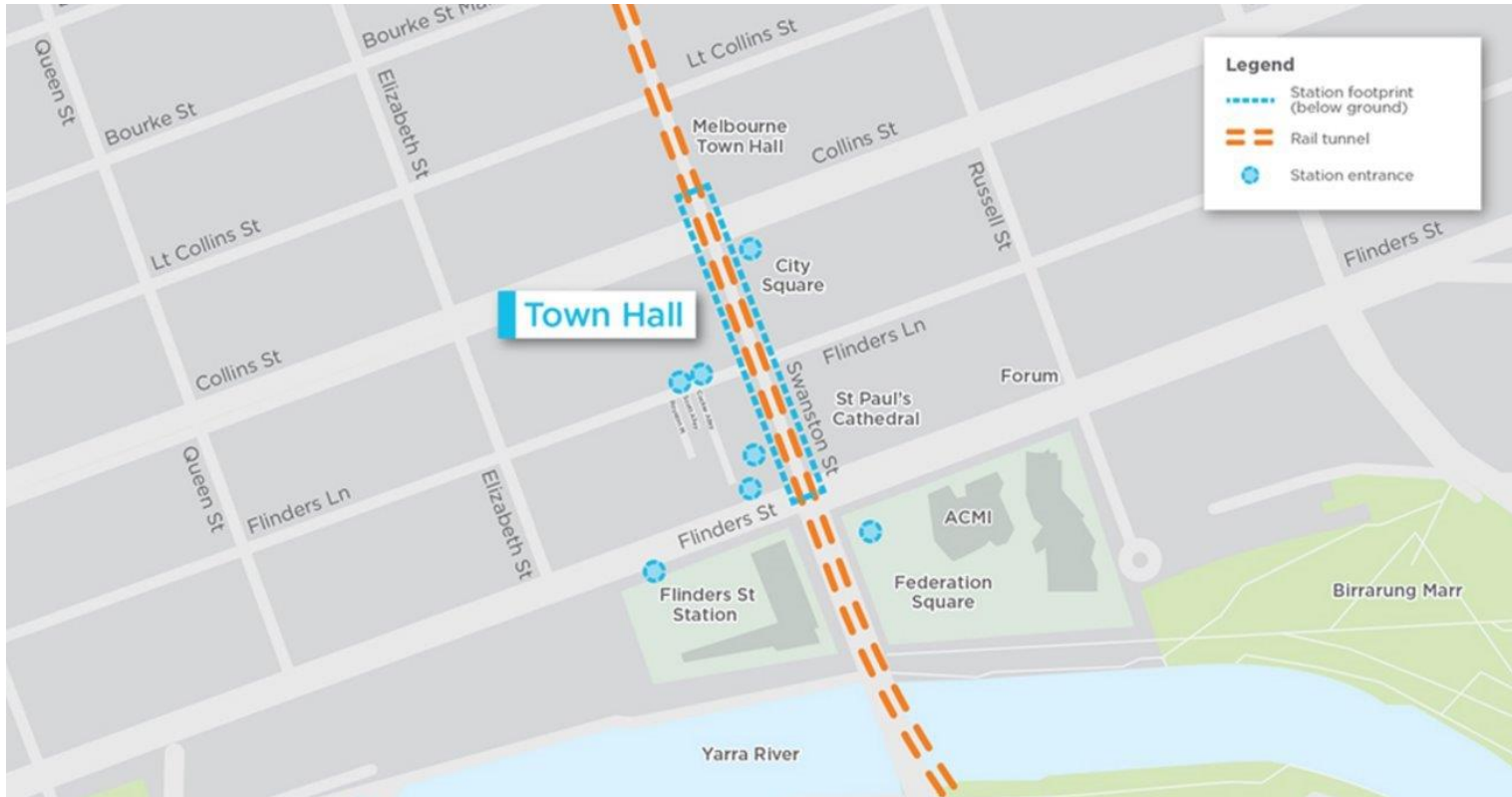
Questions

Town Hall Station

Blythe Chidgey
Cross Yarra Partnership

Town Hall Station

The Location



Aerial render

How things will look at completion



The entrances



Town Hall Station will have **seven** entrances in:

- Cocker Alley
- Scott Alley
- City Square
- Federation Square
- Degraeves Street Subway
- Flinders Street
- Swanston Street

This will improve people's access to some of Melbourne's most iconic and important landmarks.

City Square

Leaving the station walking forwards Flinders Lane



OFFICIAL: Sensitive

Town Hall Station "The Crypt"

City Square concourse

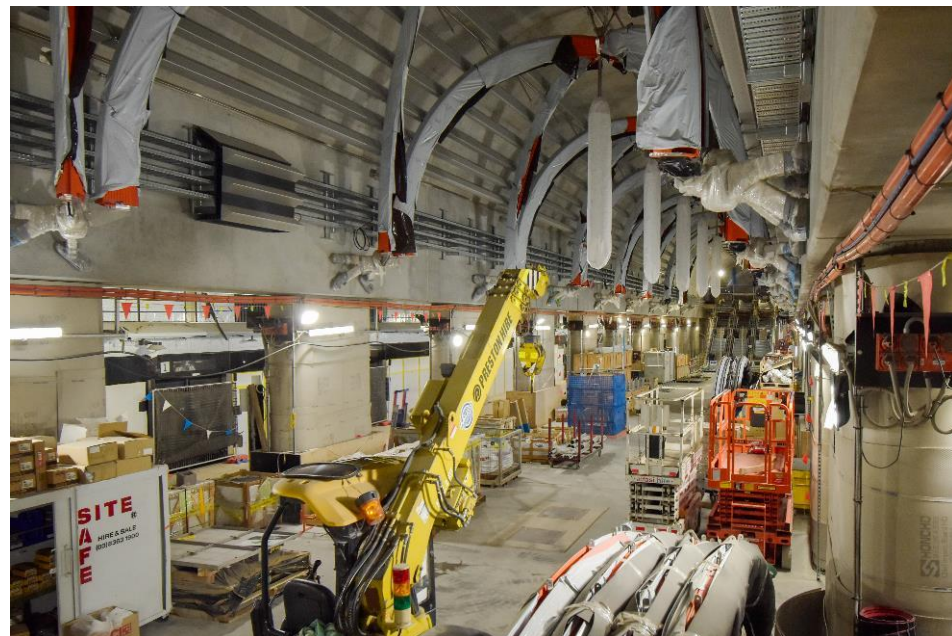
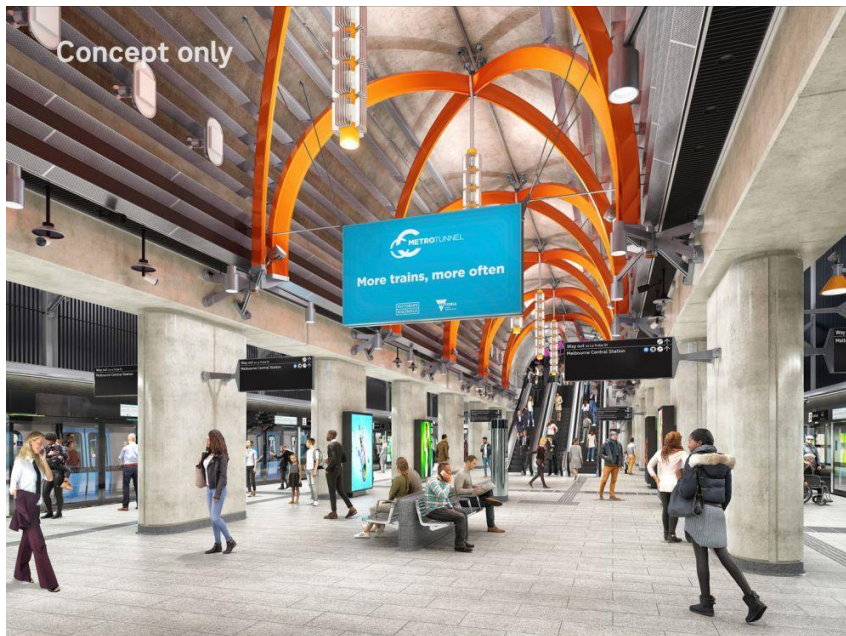


Milestones

Installation of escalators



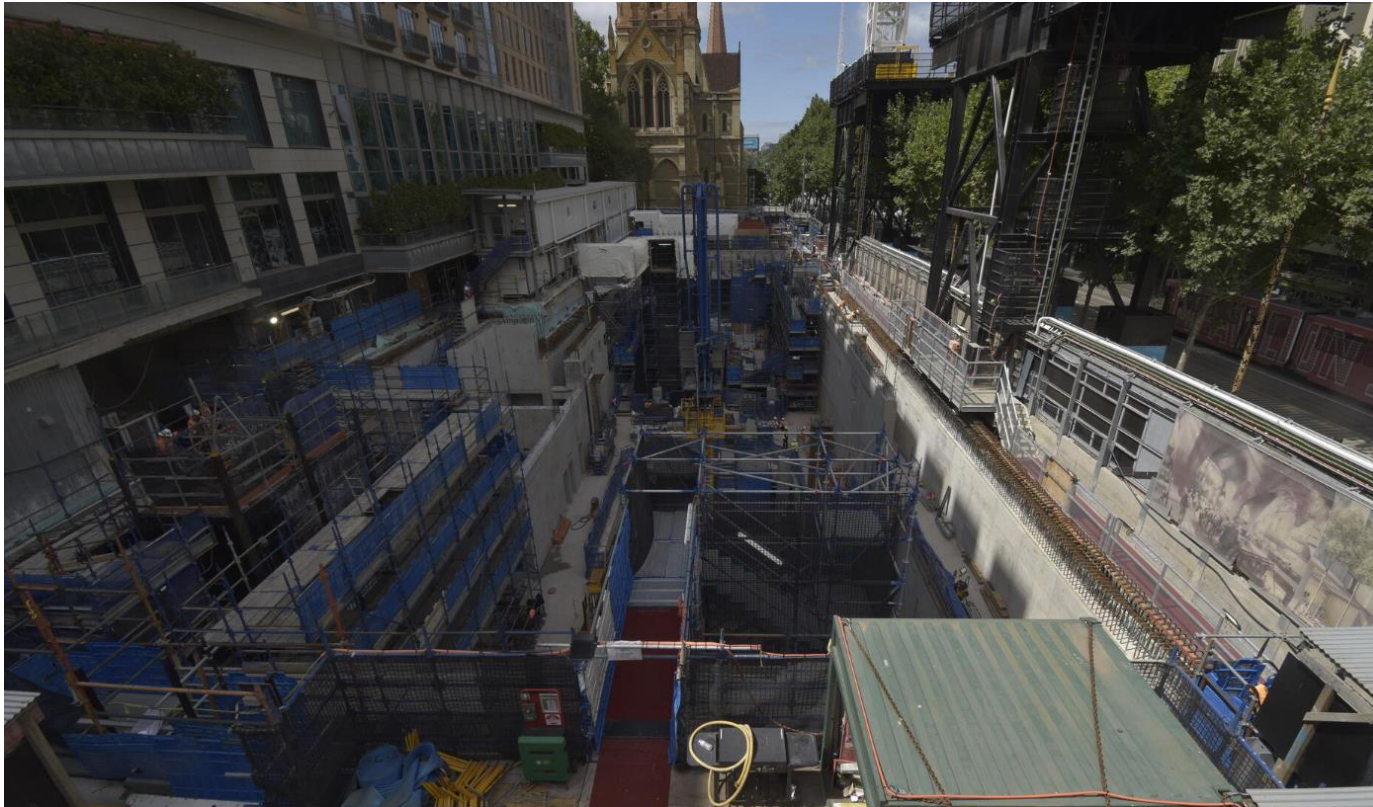
Fit out of central cavern



Build out of permanent structure at Flinders Quarter



Build out of City Square station entrance



Flinders Link

Creating an underground pedestrian connection between Flinders Street Station and the new Town Hall Station, via Campbell Arcade



Flinders Link

Lift installation between Flinders Street Station platforms and Degraves Subway



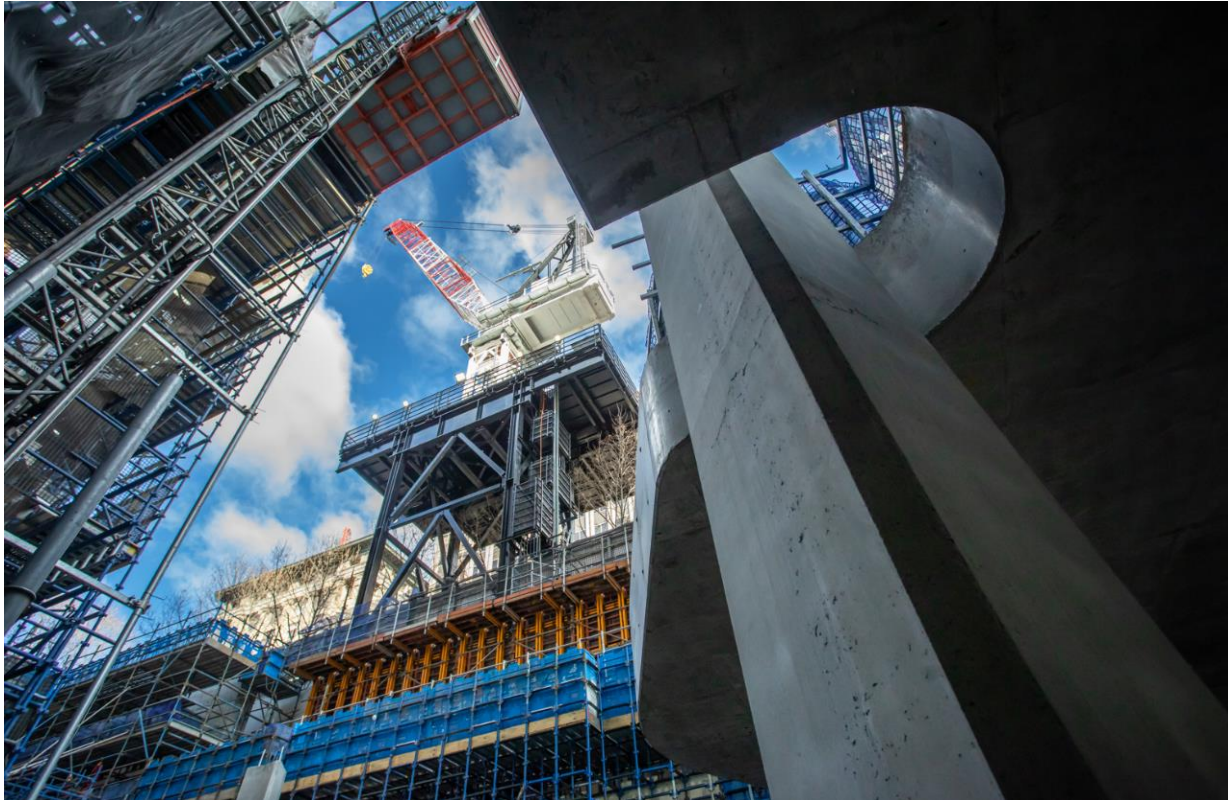
Crypt column construction

City Square



Architectural features

City Square





Lookahead

External works

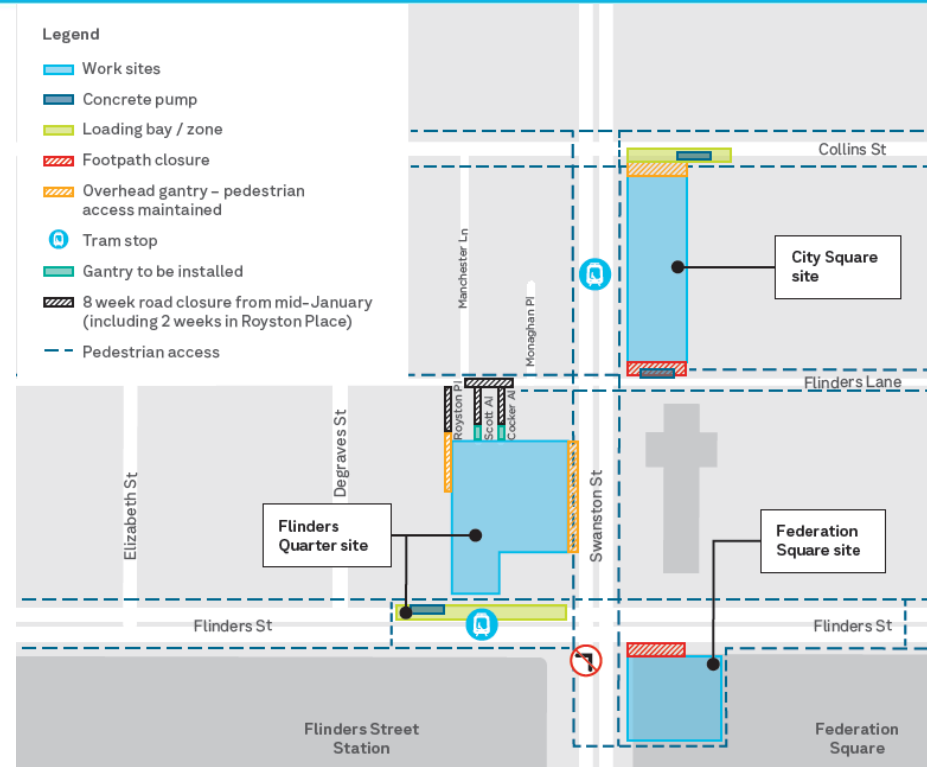
Town Hall Station



In 2024 the shift focuses to reinstating areas outside the sites in preparation of Town Hall Station opening in 2025.

This includes:

- Current works on **Flinders Lane, Cocker Alley, Scott Alley and Royston Place**
- Future works on **Swanston Street** including site shed removal at the Flinders Quarter site, tower crane removal at City Square, and other utility and reinstatement works
- Future works on **Collins Street** including loading bay removal and reinstating City Square
- Future works on **Flinders Street** to reinstate the eastbound lane between Elizabeth and Swanston streets



Questions




VIDEO

2023 CBD Precinct

Accessibility

Barry McGuren
Rail Projects Victoria

Accessibility is at the forefront of design for the Metro Tunnel stations.



Connection to transport

- DDA and taxi rank parking
- Pedestrian access to connection transport (bus/tram/train)
- Upgraded pathways and wayfinding

Sanitary facilities

- Unisex accessible WC with right and left configurations
- Changing Places adult change facility
- Ambulant cubicles in both male and female toilets

Wayfinding

- Statutory and wayfinding signage
- Tactile Ground Surface Indicators (TGSi) (directional and warning)

Step-less access and vertical transport

- Walkways
- Raised podium ramps
- Escalators and lifts










Concourse level

- Weather protected
- Direct connection to major facilities
- Customer service counters in both paid and unpaid sides of tap on/off points

Platform level

- Generous platform width
- Platform screen doors
- Customer Help Points (CHP)
- Evacuation strategy

Accessibility

-  Accessibility ramp
-  Bus replacement services
-  Customer help desk
-  DDA Parking
-  Escalator
-  Lift
-  Tactile Ground Surface Indicators (TGSI)
-  Taxi rank
-  Wayfinding signage



Accessibility

-  Ambulant and Accessible toilets
-  Escalator
-  Lift
-  Tactile Ground Surface Indicators (TGSi)
-  Wayfinding signage



Accessibility

There will be Changing Places at all stations, both inside and outside the ticketing gates.

Each Changing Place includes:



Creative Program

Barry McGuren
Rail Projects Victoria

The Creative Program commenced in 2018 and:

- curates artworks and events to enhance the city alongside the construction sites for residents and business
- maintains the city as a vibrant, attractive destination
- supports content creators/ artists





Current: *The Parkville Storytelling Project*



Current: *Jasmine Parasram: Parkville in Full Bloom*



Current: *Triangular Dimensions*

Current: *Marcus Lee*



2023 Highlight:
*Lunchtime Jazz at
University Square*



Current: *Queer PHOTO in the City*



Current: *Carla Cottgens: Guardians*



Current: *Katy Smits: Metropolitan Tiles*

2023 Highlight:
RMIT Campus Fest



2023 Highlight: *100 Feet Under the Street*

Town Hall



Current: Patricia Stewart from the Dax Centre



Current: Ash Keating: Gravity System Response



Current: Boorimul Boobooop Narkwarren (Emu Family) roaming free on Country

2023 Highlight:
Above and Beyond



Middle – 2023 Highlight:
Punk Emus at City Square for Christmas

Right – 2023 Highlight:
Sanctum Studios at Fed Square



Current: Jess Hall: Elemental



Current: MAV: Kaleidoscope



Current: Annie Davidson: Gathering in the Garden.



*2023 Highlight:
Carols by Candlelight at Anzac Station*



*Current: Dianna Wells:
Walking within a grassy woodland*



*2023 Highlight:
Making the Metro Tunnel exhibition*

2024 will be an exciting year for the Metro Tunnel Creative Program with:

- a shift to more activations and performances, as construction hoardings come down
- prominent Melbourne cultural institutions and festivals



Questions