



# TRANSFORMING VICTORIA'S RAIL NETWORK

PRESENTATION TO RESIDENTS 3000

3 MAY 2018



**Western Portal**

South Kensington

**North Melbourne**

**Parkville**

**State Library**

**Town Hall**

**Anzac**

**Eastern Portal**

The existing 'North Melbourne' station will be renamed West Melbourne.

West Melbourne

Melbourne Central

Flagstaff

Parliament

Southern Cross

Flinders Street

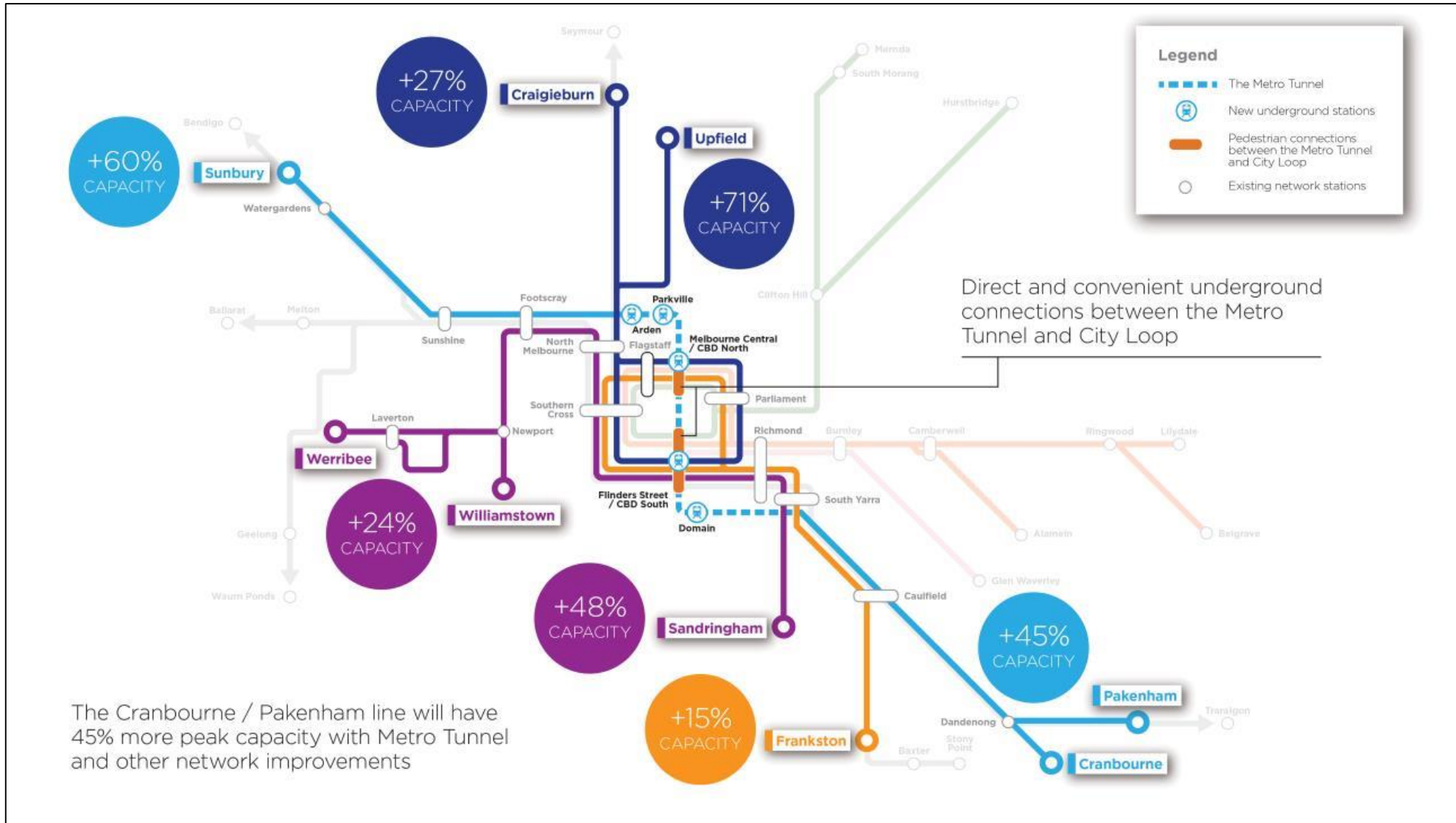
Richmond

South Yarra

Sunbury Line

Cranbourne / Pakenham Line

# CAPACITY BENEFITS





# PROJECT BENEFITS

# CAPACITY & INNOVATION

## Innovative systems

- ★ Platform screen doors
- ★ World-class high capacity signalling
- ★ Two hi-tech control centres

## Capacity for



# 39,000

more passengers in each peak



Train every

# 2-3 mins



# 65



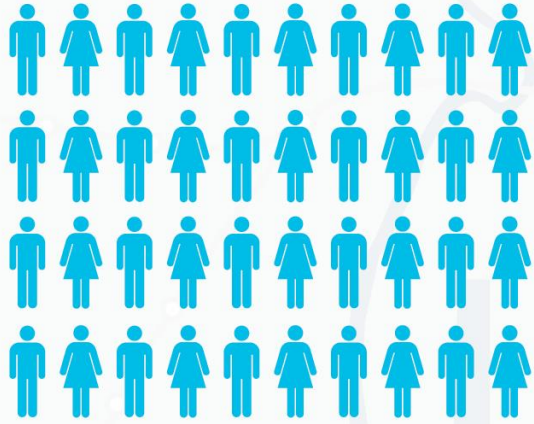
## High Capacity Metro Trains

with up to 10 carriages

# Reduces crowding

across the network

# JOBS & ECONOMIC BENEFITS

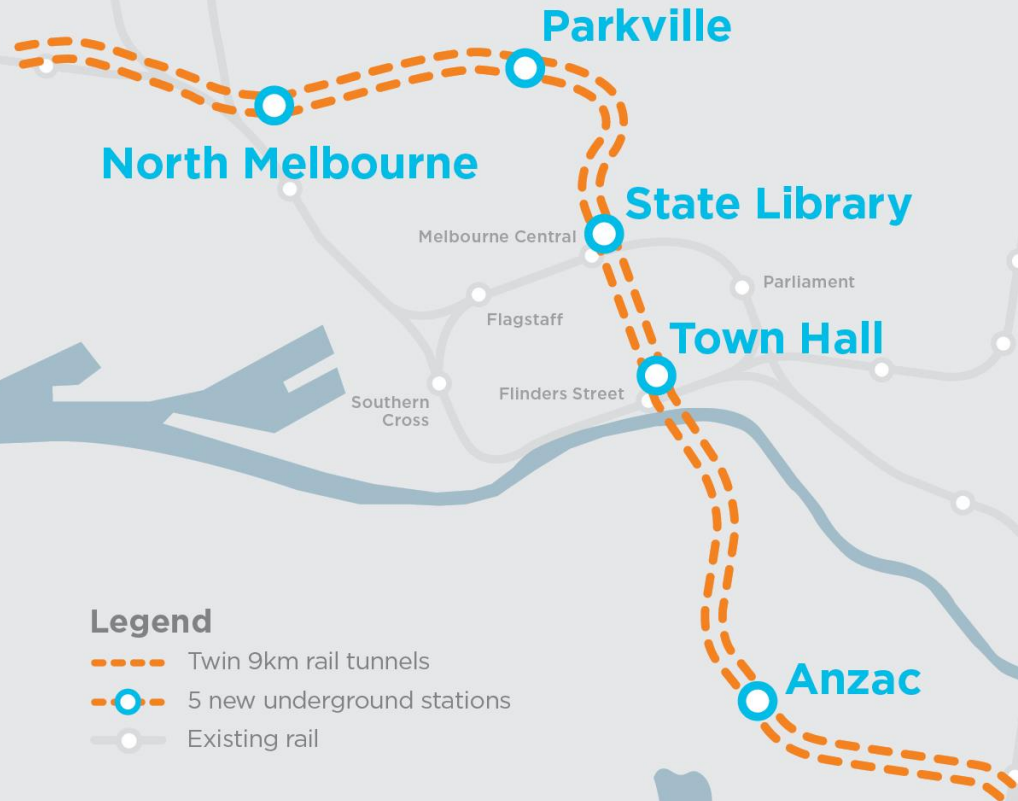


Up to  
**7,000**

jobs including nearly

**800**

apprentices, trainees  
and engineering cadets



**88%**

of materials  
sourced locally  
including

**93%**

local steel



**65%**

of the  
project will  
be delivered  
by small  
to medium  
businesses

Increase by at least

**\$7bn**

Victoria's Gross  
State Product



# ACCESS BENEFITS





# EARLY WORKS





# CBD SOUTH NOW KNOWN AS 'TOWN HALL STATION'

Works completed to date:

- Closure of City Square and demolition of the underground car park
- Demolition of five Swanston Street facing buildings between Young and Jackson Hotel and the Nicholas Building
- Demolition of majority of Port Phillip Arcade and removal of the King Neptune Sculpture

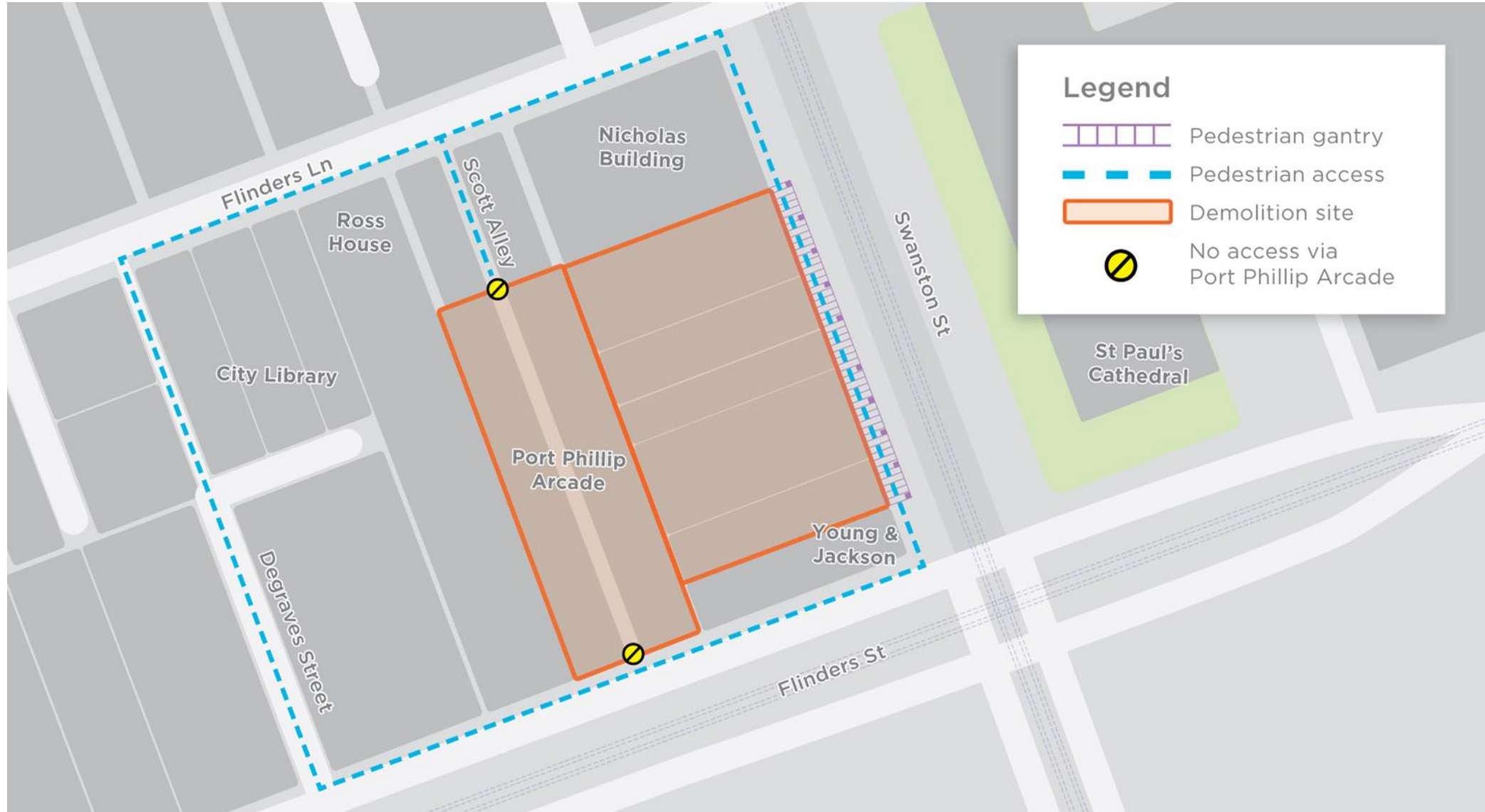
Remaining Works:

- Demolition of old KFC building (next to Nicholas Building)
- Demolition of Port Phillip Arcade Flinders Street façade

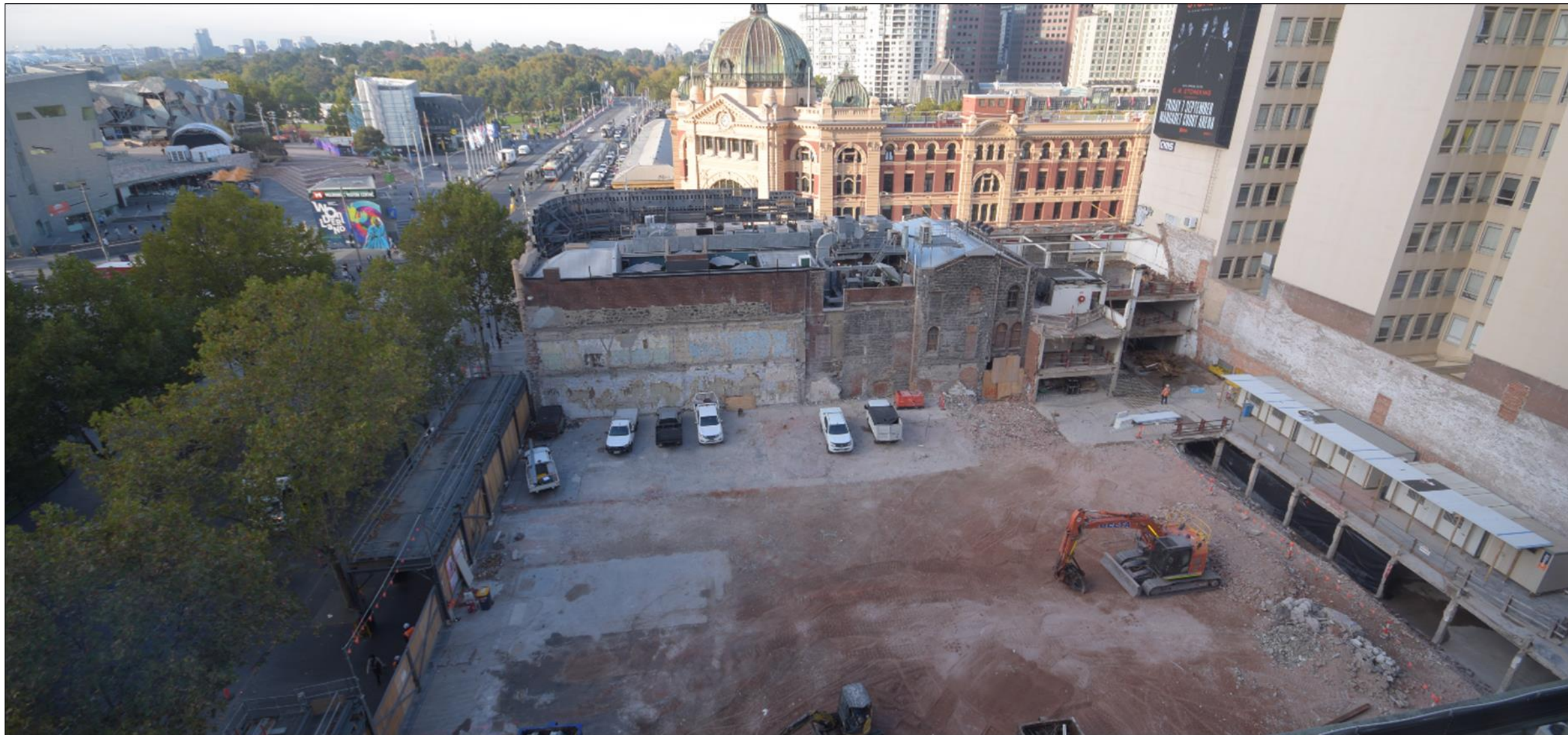
# CITY SQUARE DEMOLITION



# TOWN HALL STATION DEMOLITION WORKSITE



# SWANSTON STREET BUILDING DEMOLITION



# PORT PHILLIP ARCADE DEMOLITION





# CBD NORTH NOW KNOWN AS 'STATE LIBRARY STATION'

Works completed to date:

- Closure of Franklin Street East and relocation of services
- Closure of A'Beckett Street and relocation of services
- Relocation of services on Franklin Street West
- Construction of acoustic enclosure and beginning of shaft excavation at Franklin Street East
- Construction of acoustic enclosure and beginning of shaft excavation at A'Beckett Street
- Demolition of buildings on the corner of Swanston Street and La Trobe Street

# FRANKLIN STREET EAST SITE

FEB 17



FEB 18



# A'BECKETT STREET SITE





# FRANKLIN STREET WEST SITE



# LA TROBE / SWANSTON STREET SITE



# Residents 3000 – Town Hall and State Library station precincts

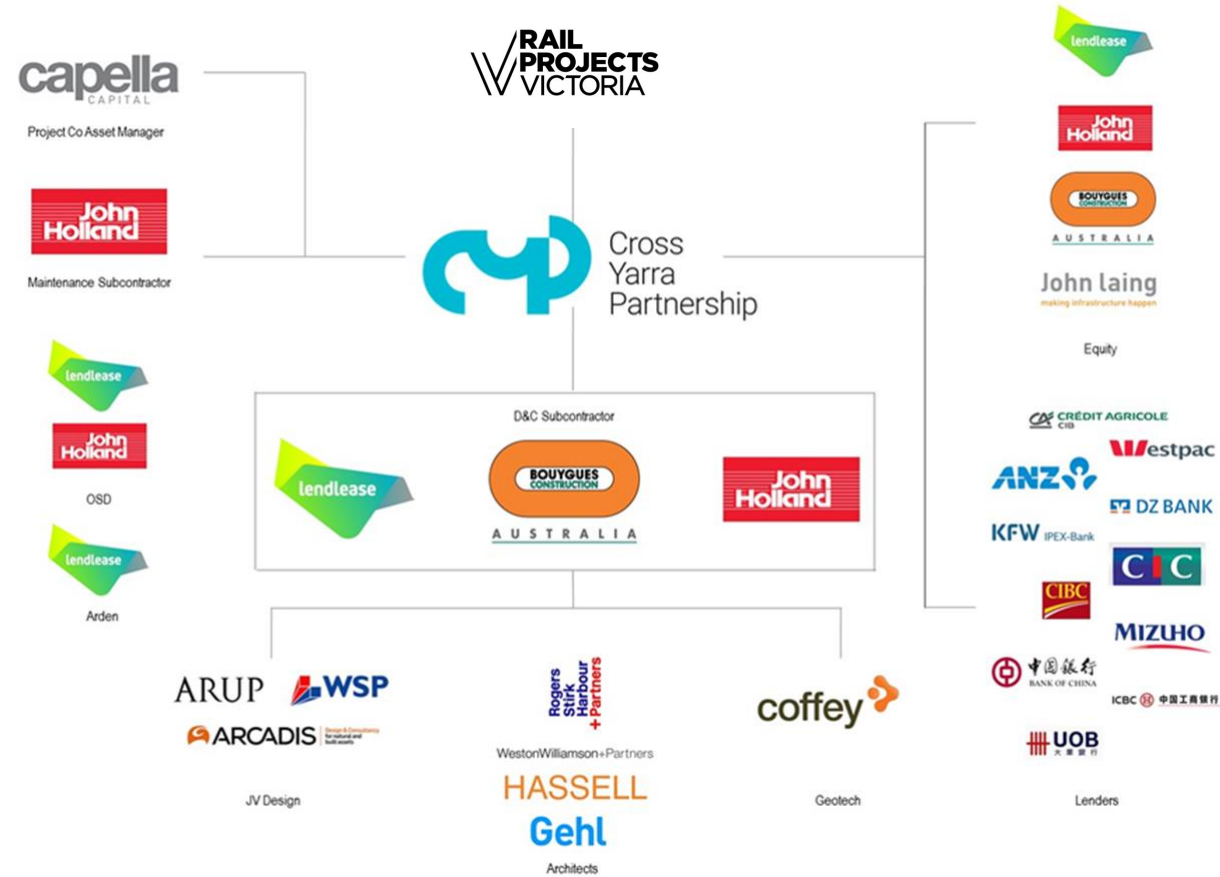


# Project Structure



Cross  
Yarra  
Partnership

# CBD Project Organisation Chart





## THE PLANNING APPROVAL PROCESS

- December 2016 - Environmental Impact Assessment approved
- November/December 2017 – Development Plan process and public exhibition
- December 2017 – Financial close
- March 2018 – Development Plans approved
- April 2018 – Planning Scheme Amendment (PSA) process
- June 2018 – PSA GC82 expected approval



## **CHANGES FROM REFERENCE DESIGN**

- Campbell Arcade connection from Flinders Quarter site to Flinders Street station
- New shaft at Little La Trobe Street
- Trinocular station cavern
- One main entrance at City Square

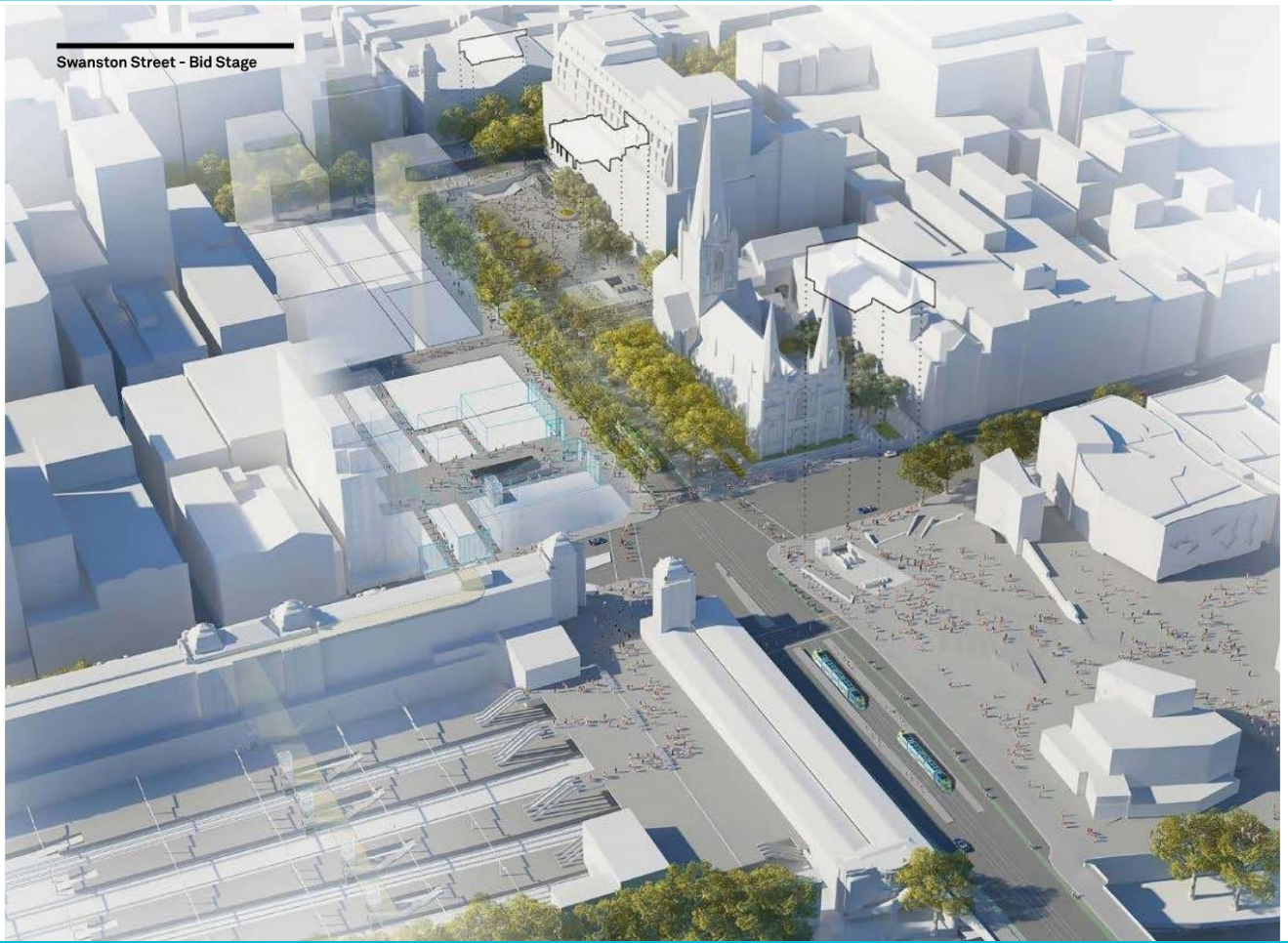
# Town Hall station - overview



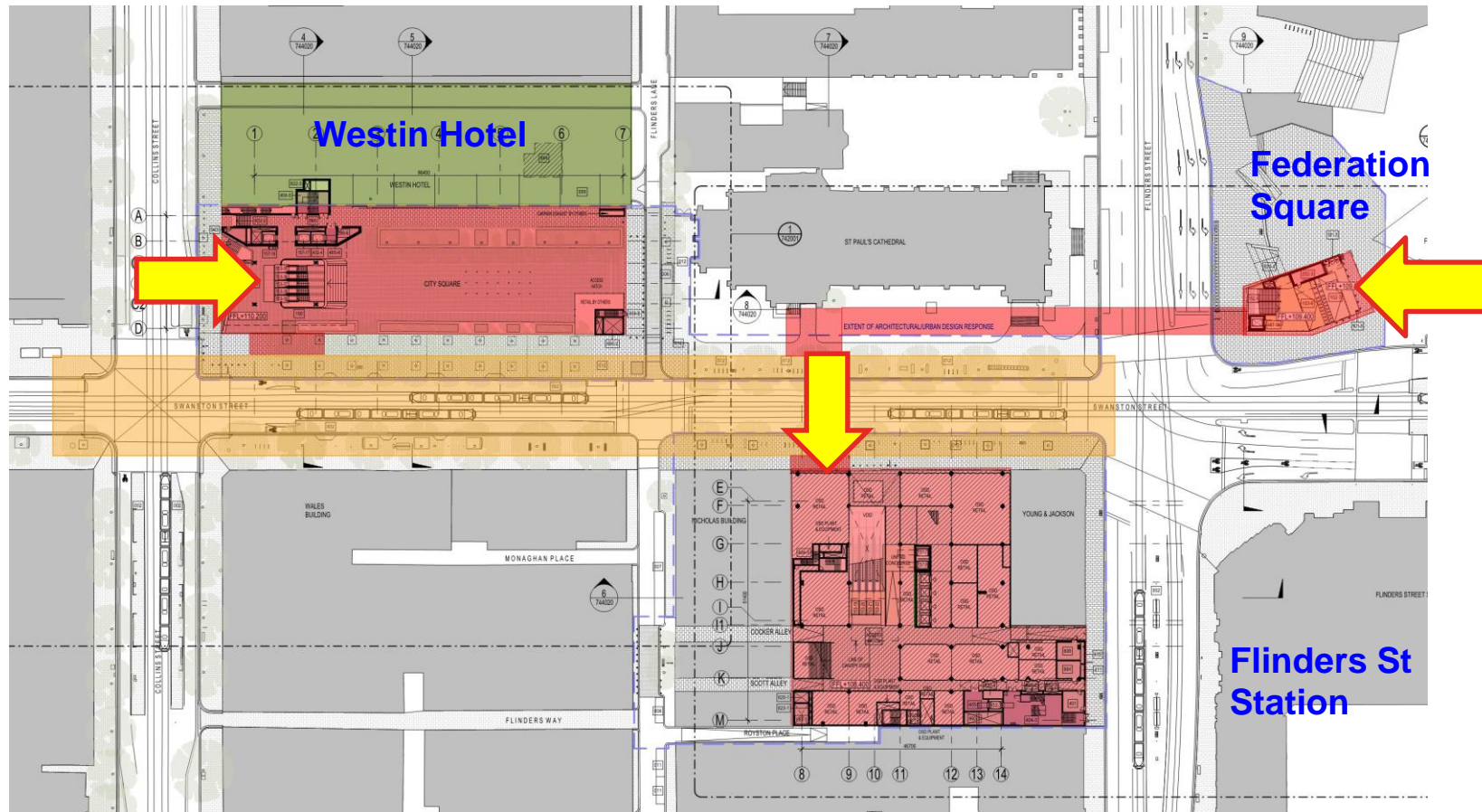
Cross  
Yarra  
Partnership



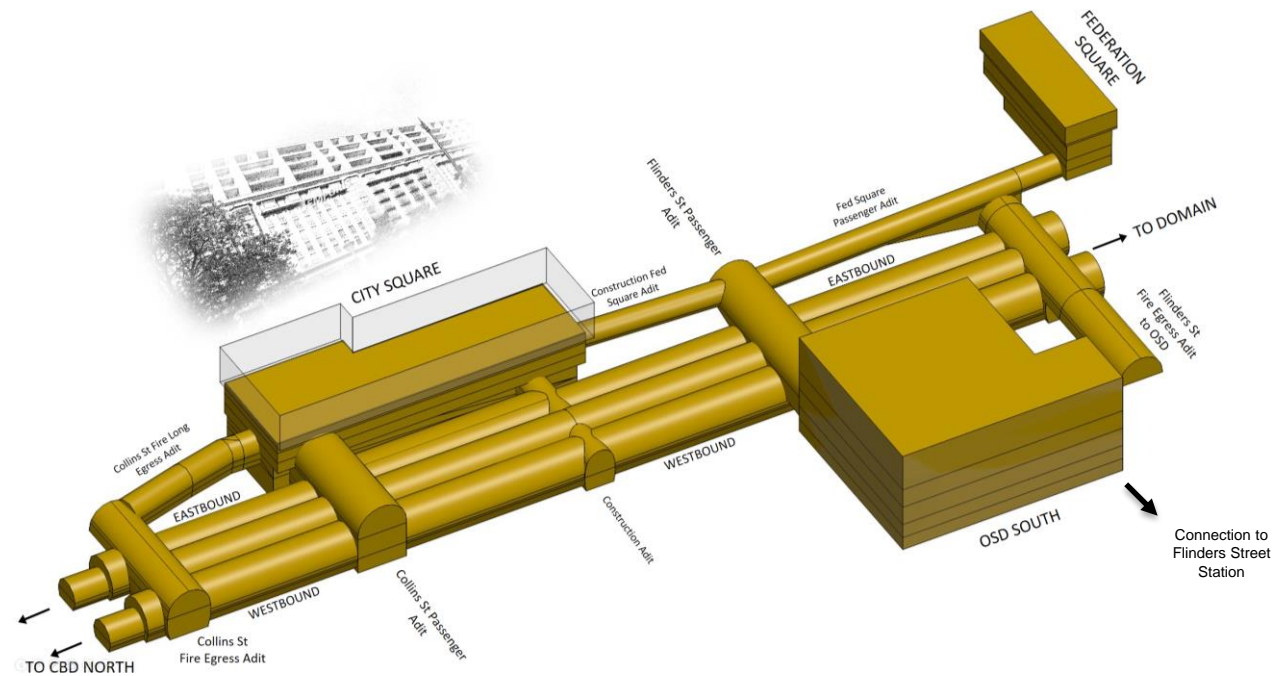
# TOWN HALL STATION PUBLIC REALM



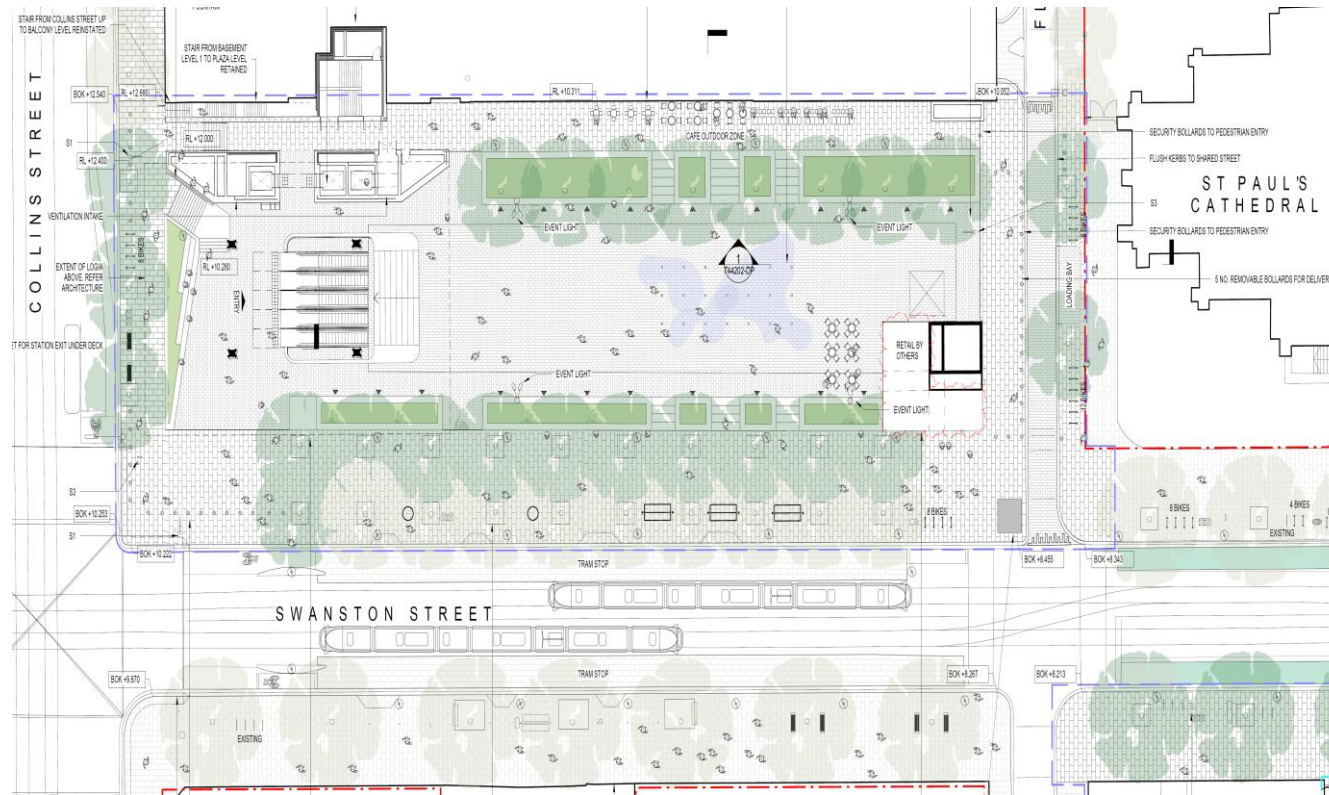
# TOWN HALL STATION PEDESTRIAN ACCESS



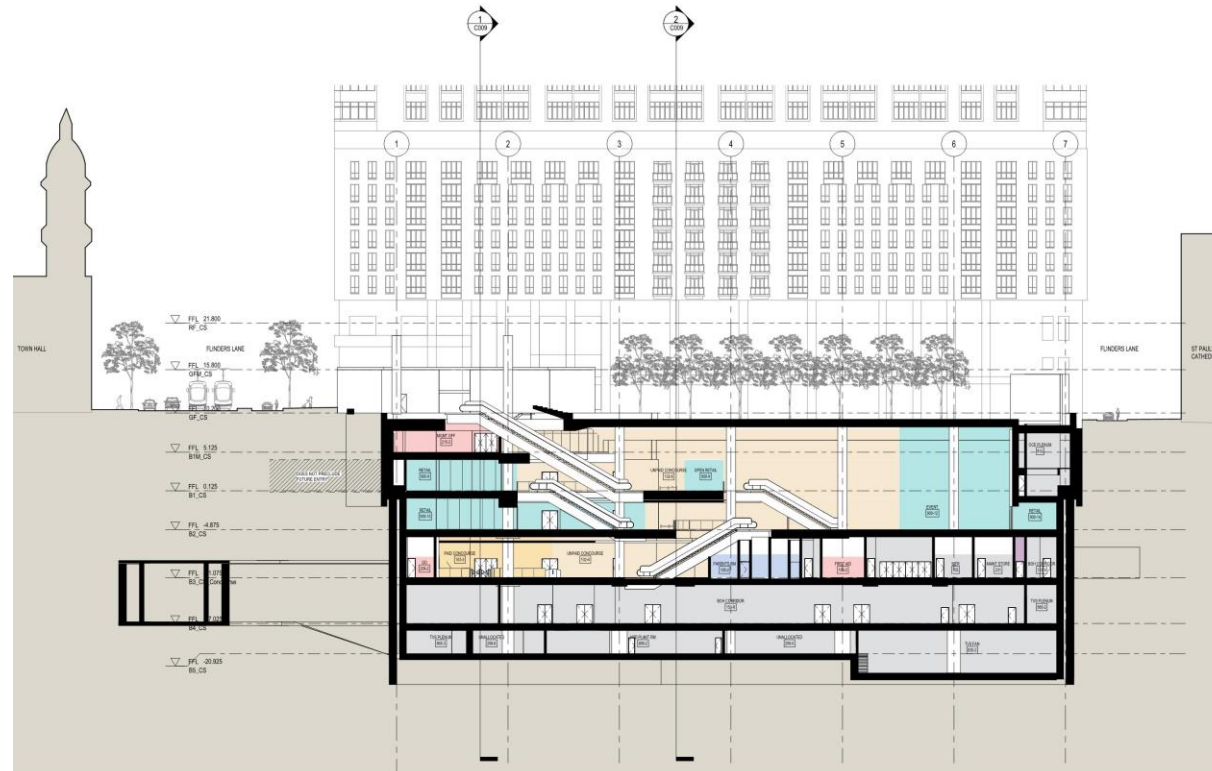
# TOWN HALL STATION UNDERGROUND CONNECTIONS



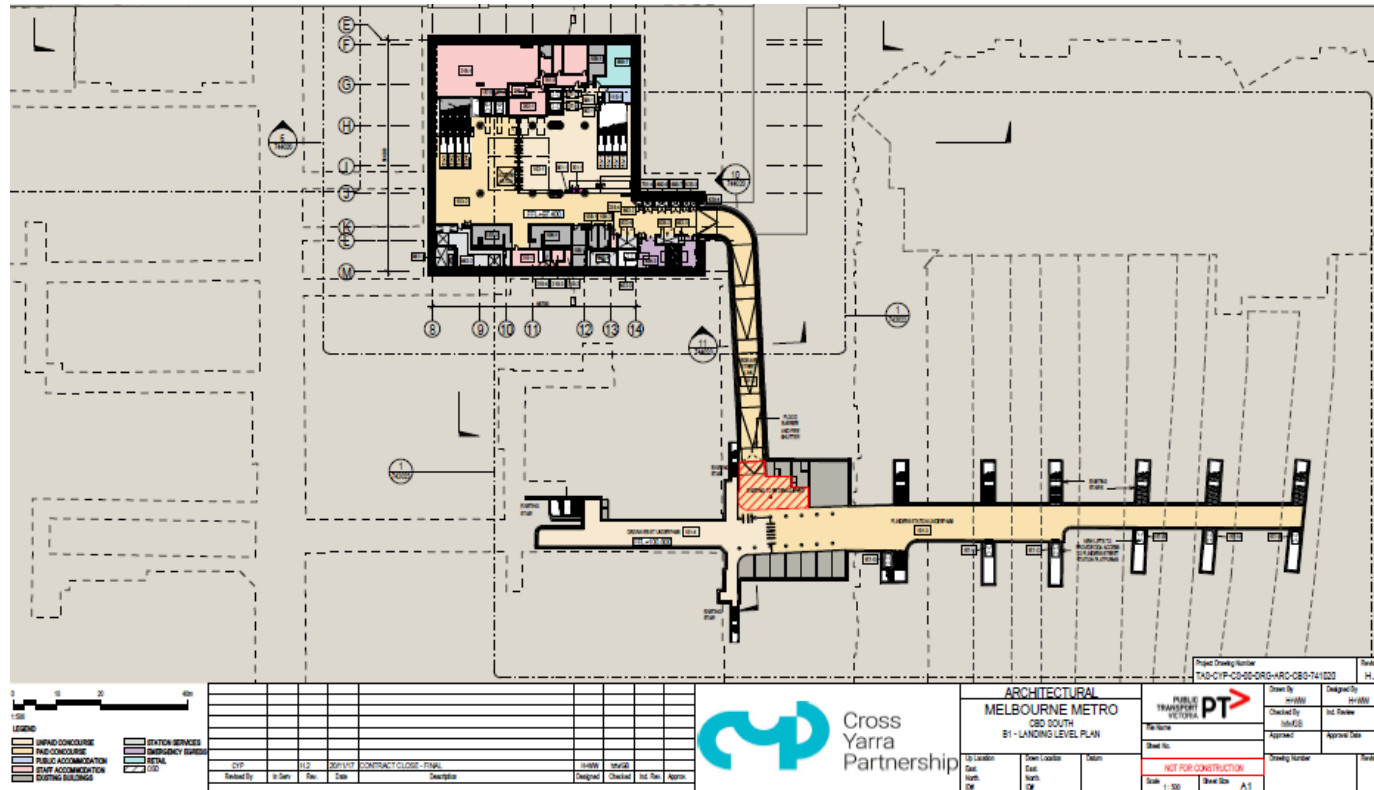
# TOWN HALL STATION PUBLIC REALM CITY SQUARE



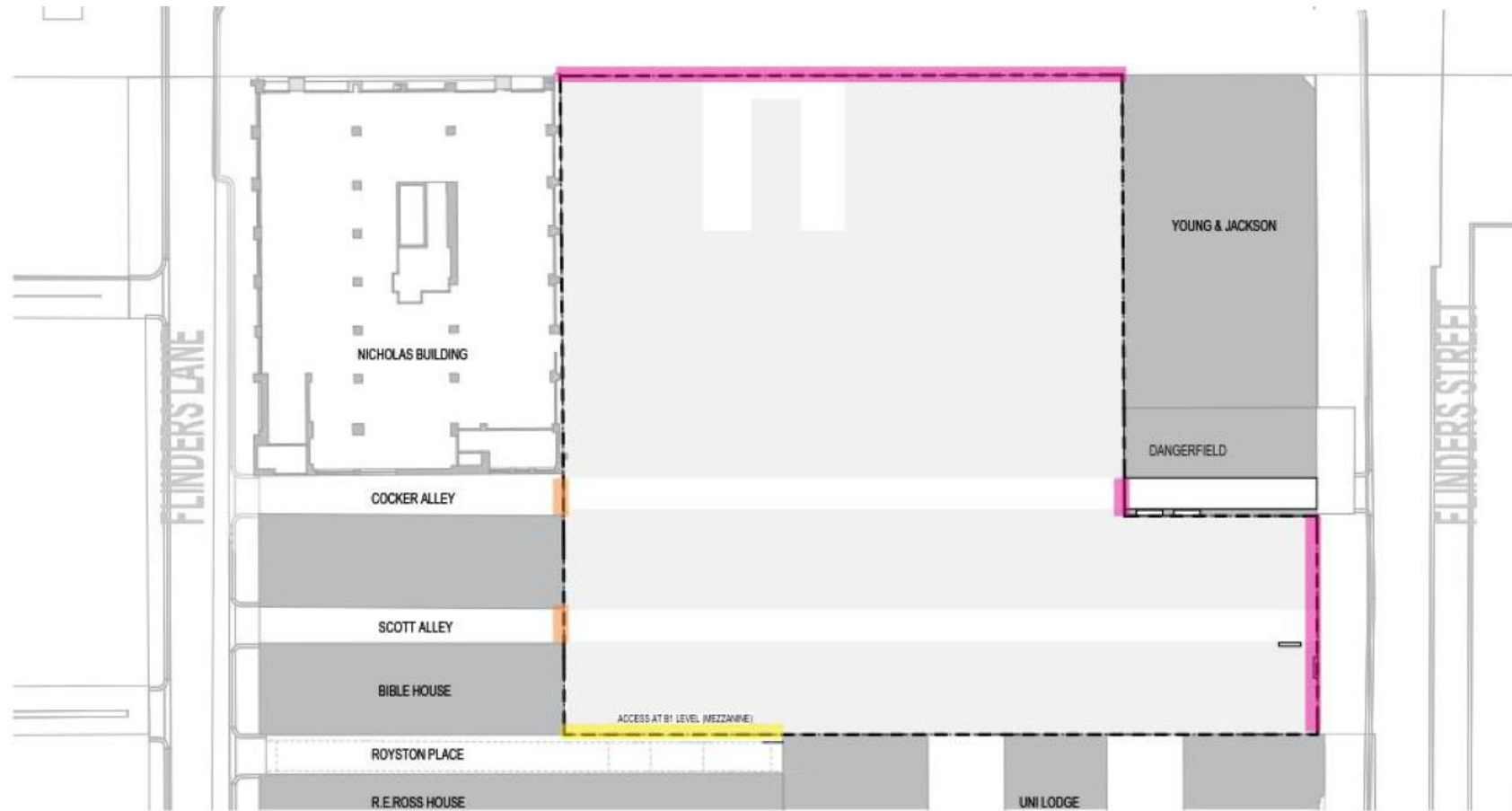
# TOWN HALL STATION – VIEW TO WESTIN HOTEL



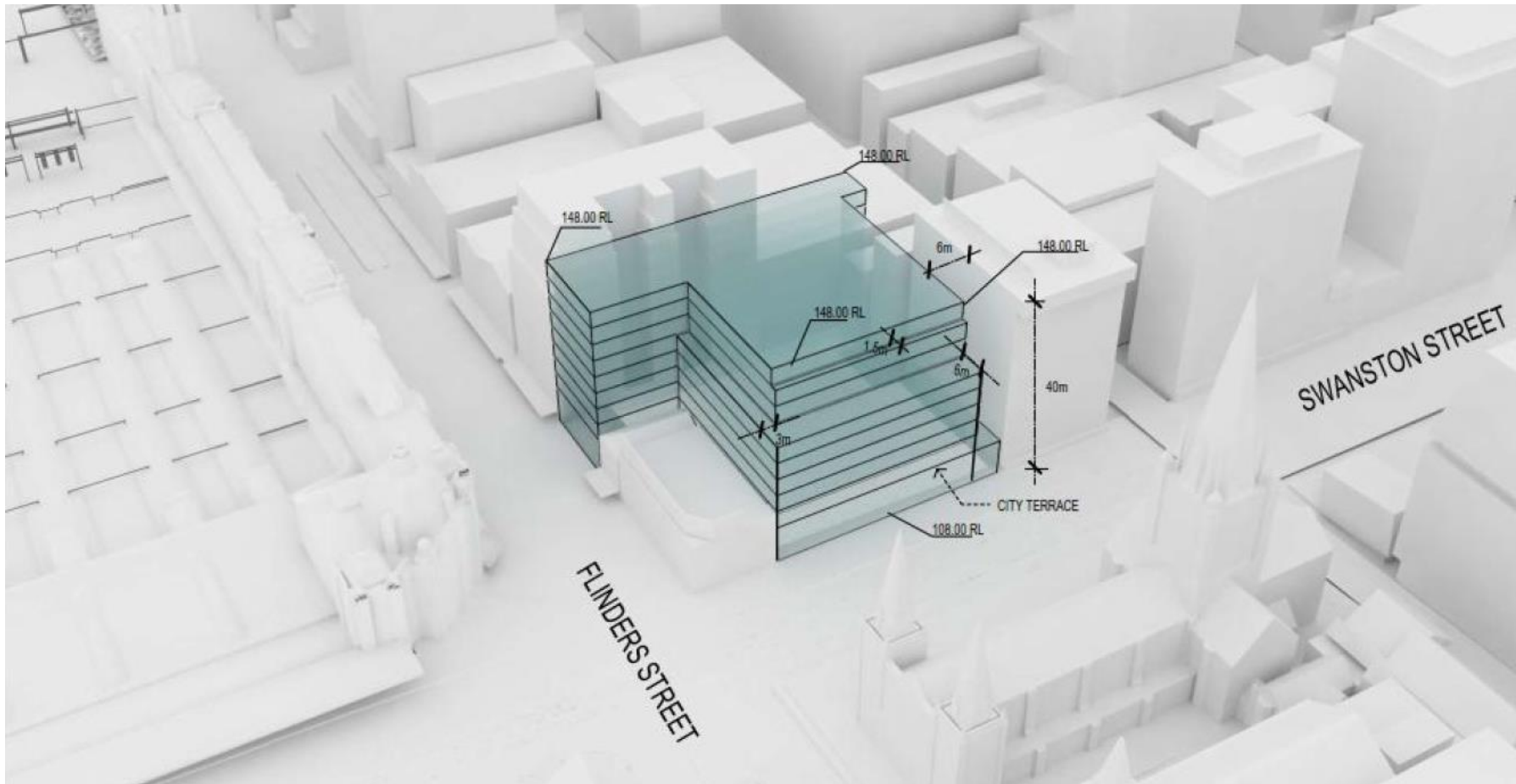
# TOWN HALL STATION – CONNECTION TO FLINDERS STREET STATION



# TOWN HALL STATION LAYOUT GROUND LEVEL



# TOWN HALL STATION OVERSITE DEVELOPMENT



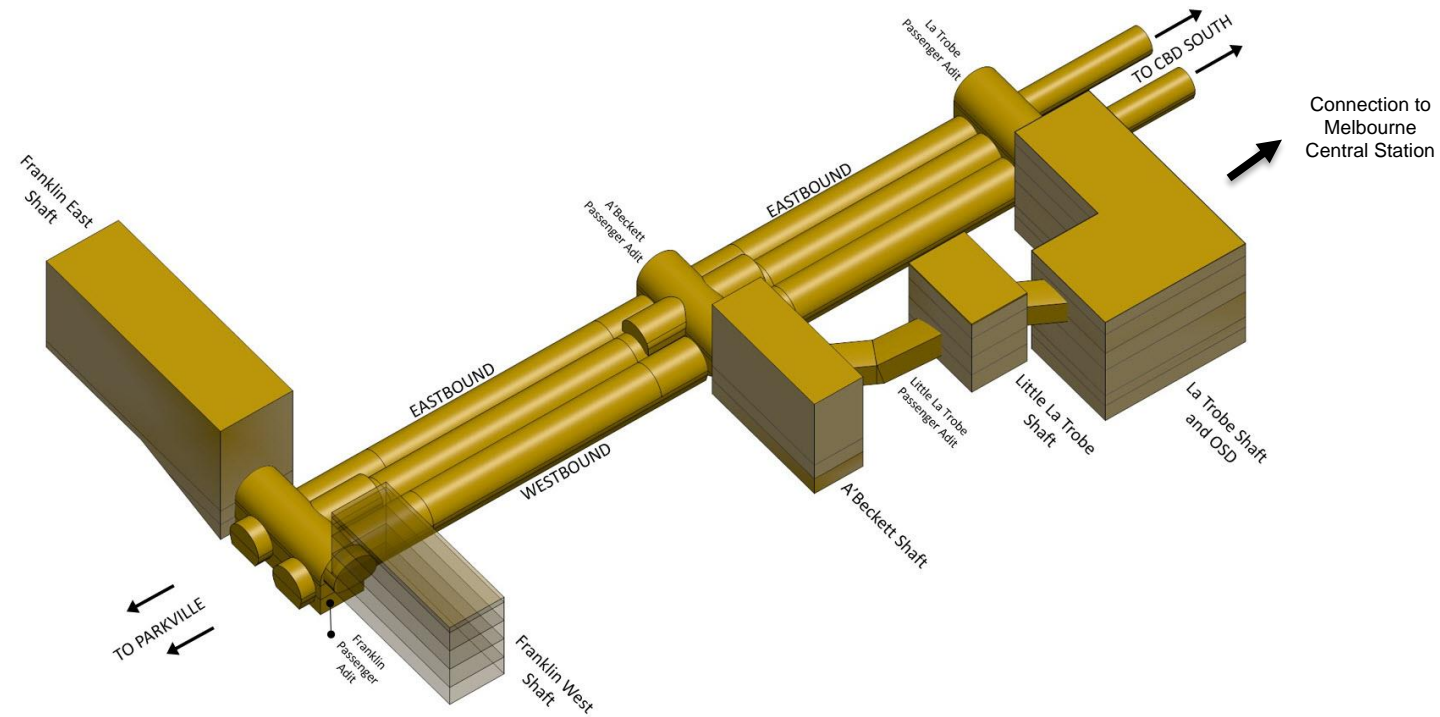


# State Library station - overview

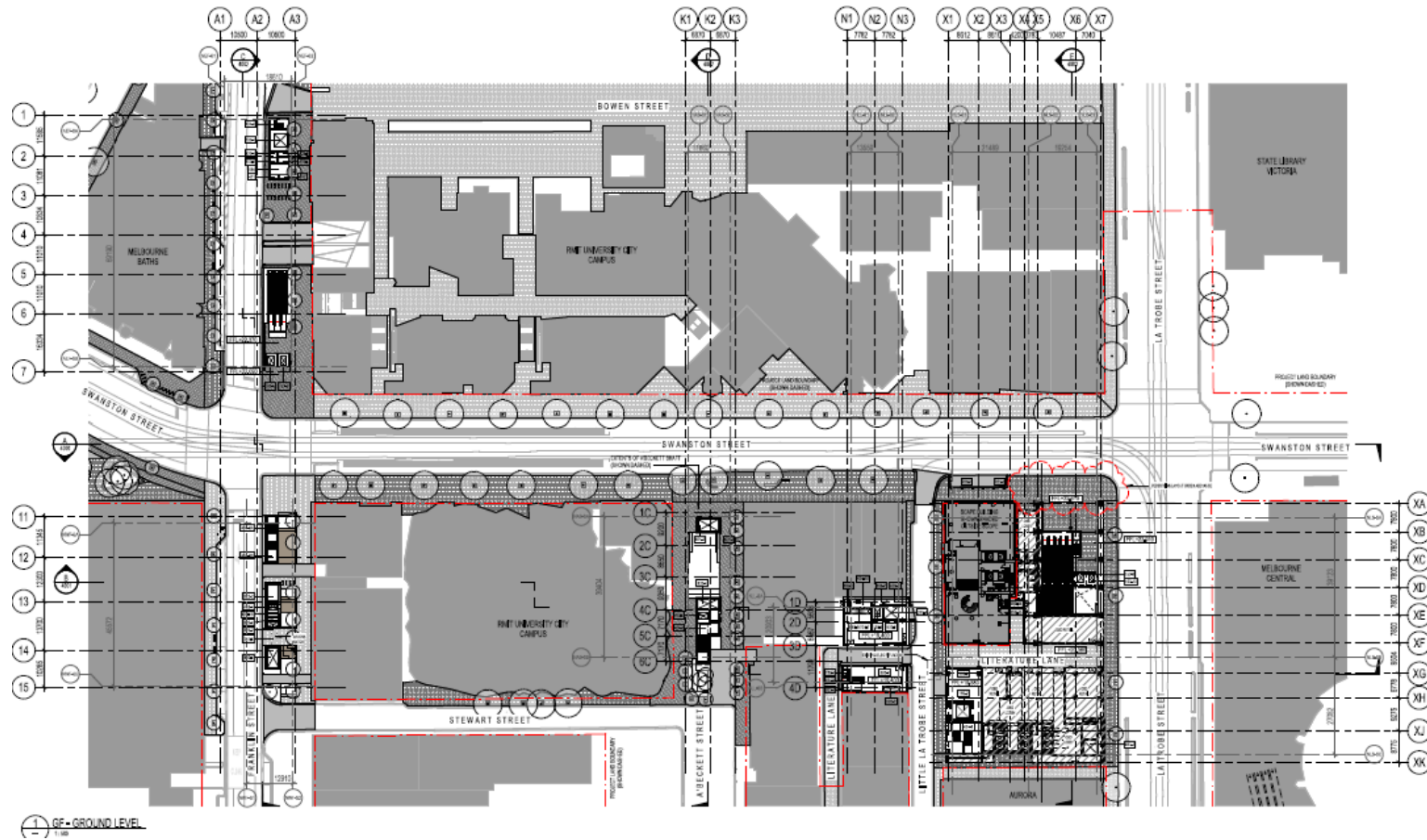


Cross  
Yarra  
Partnership

# STATE LIBRARY STATION UNDERGROUND CONNECTIONS



# STATE LIBRARY STATION SITE PLAN

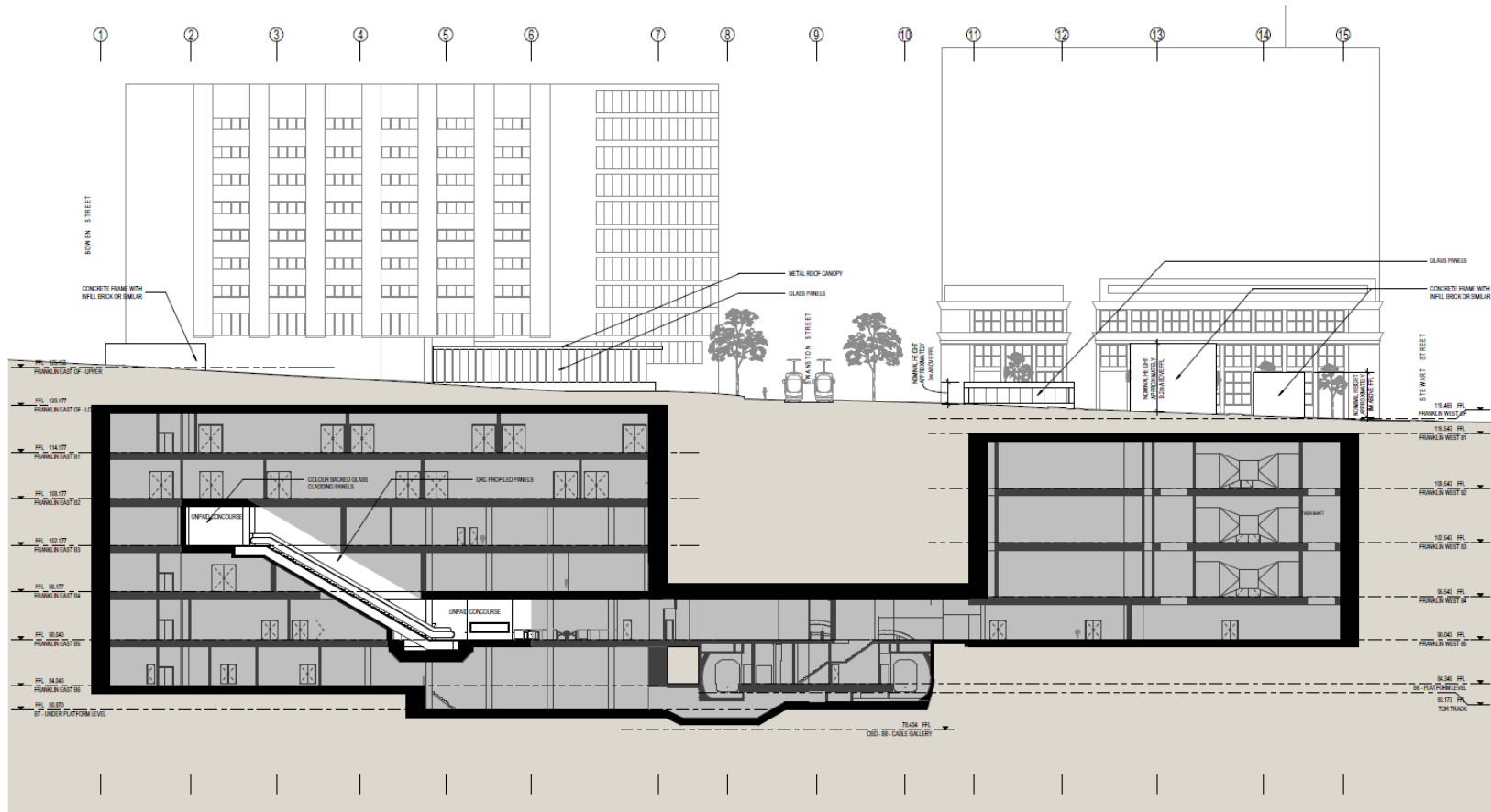


# STATE LIBRARY STATION ENTRANCE AND CONCOURSE SECTION

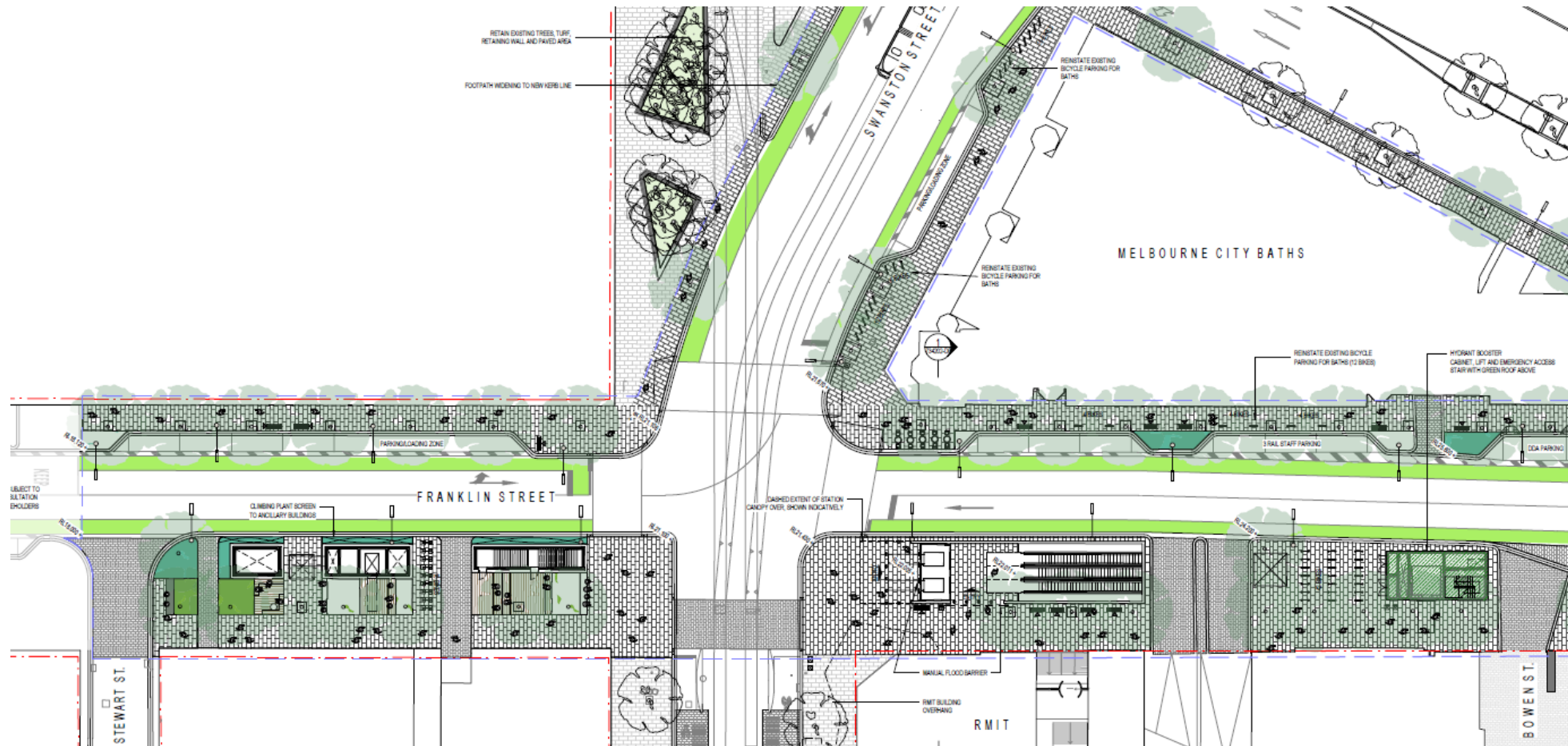


Long Section

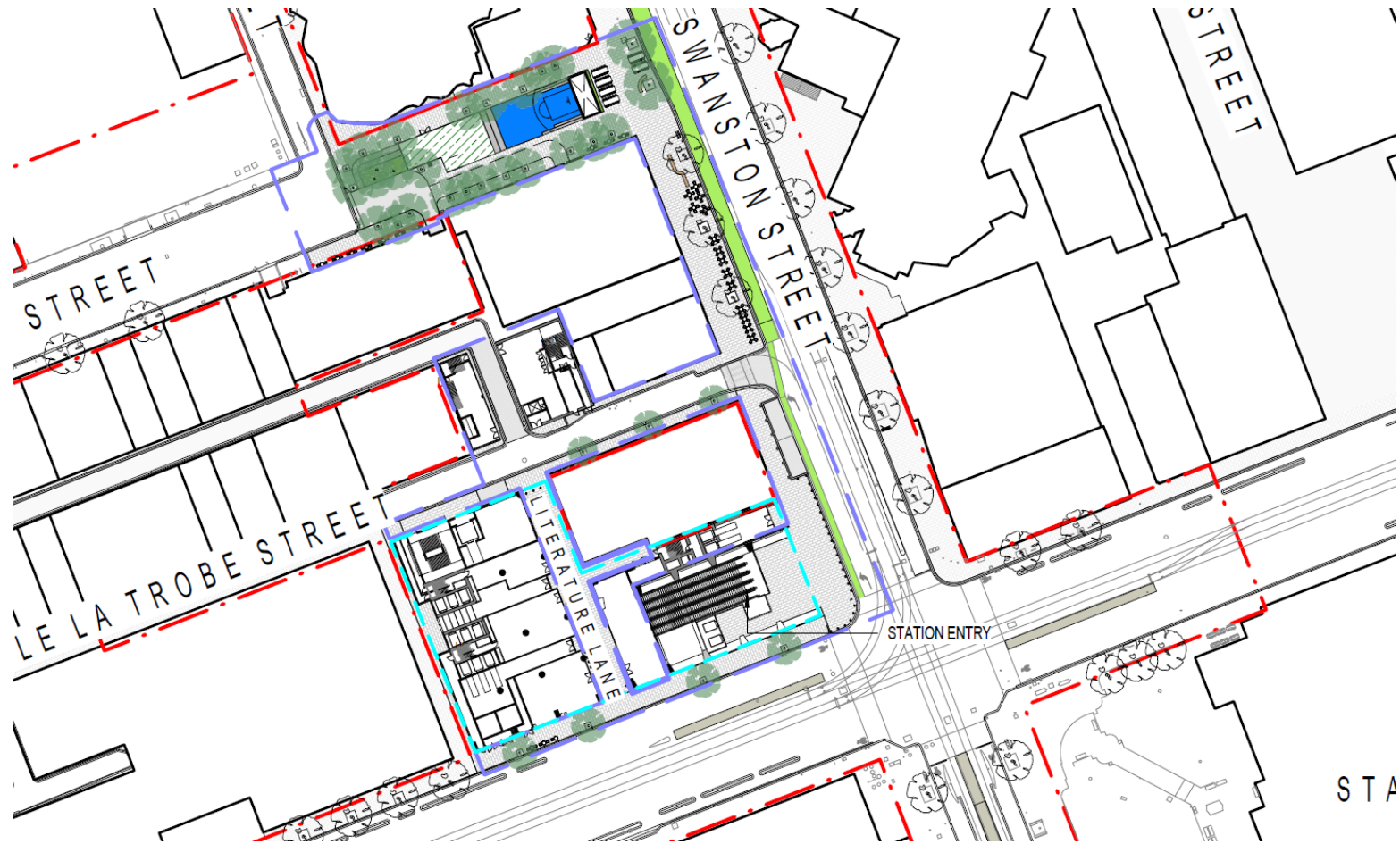
# STATE LIBRARY STATION CROSS SECTION



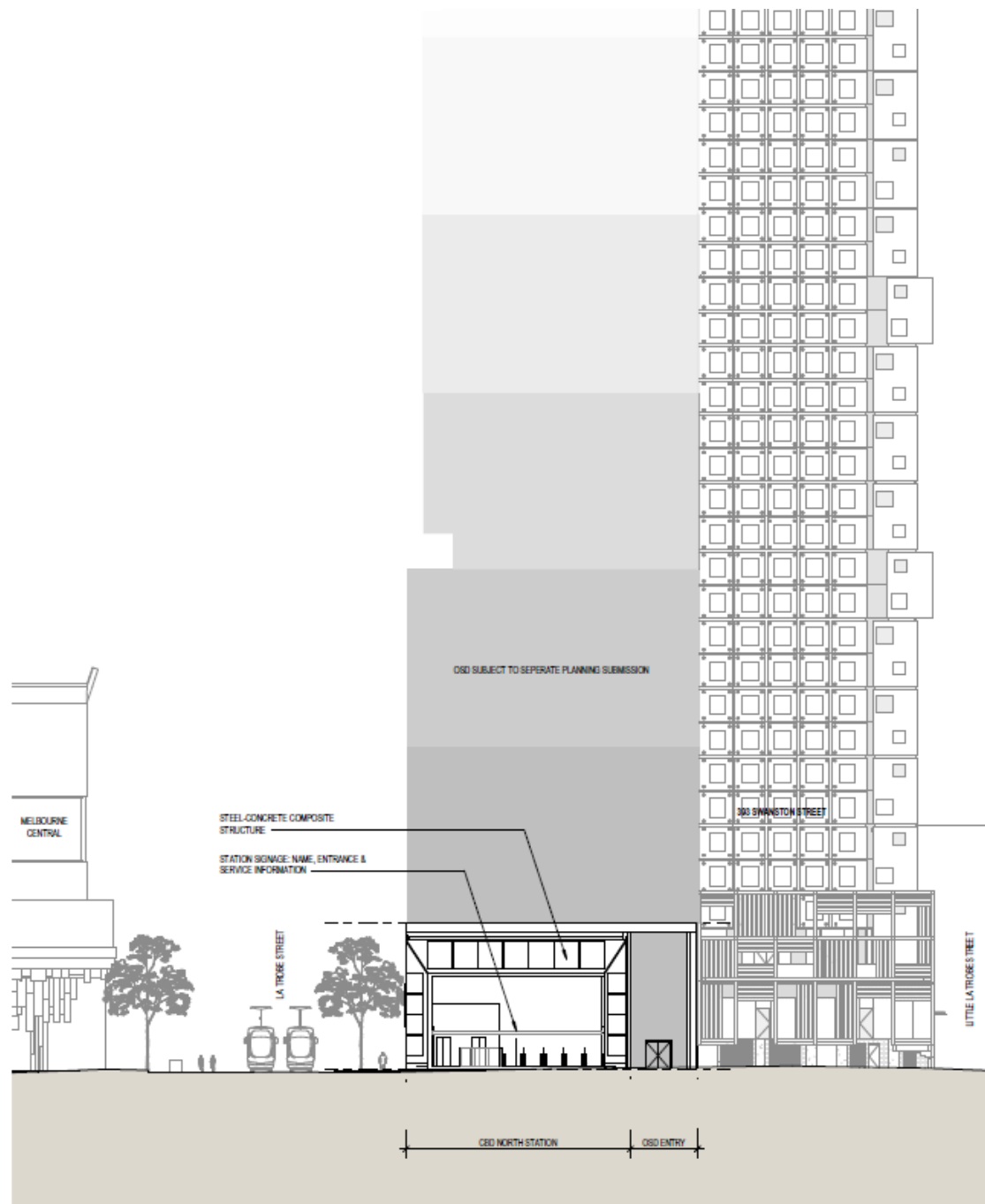
# STATE LIBRARY STATION PUBLIC REALM



# STATE LIBRARY STATION PUBLIC REALM



# STATE LIBRARY STATION OVERSITE DEVELOPMENT





# CBD Precinct Indicative Program



Cross  
Yarra  
Partnership

## KEY CONSTRUCTION DATES – BORED PILING

Station	Site	Indicative Start
Town Hall Station	City Square site	Mid-2018
	Federation Square site	Start-2019
	Flinders Quarter site	Mid-2018
State Library Station	La Trobe Street site	September 2018
	Little La Trobe site	Late 2018
	Franklin Street West site	Late 2018
	Franklin Street East site	-
	A'Beckett Street site	-

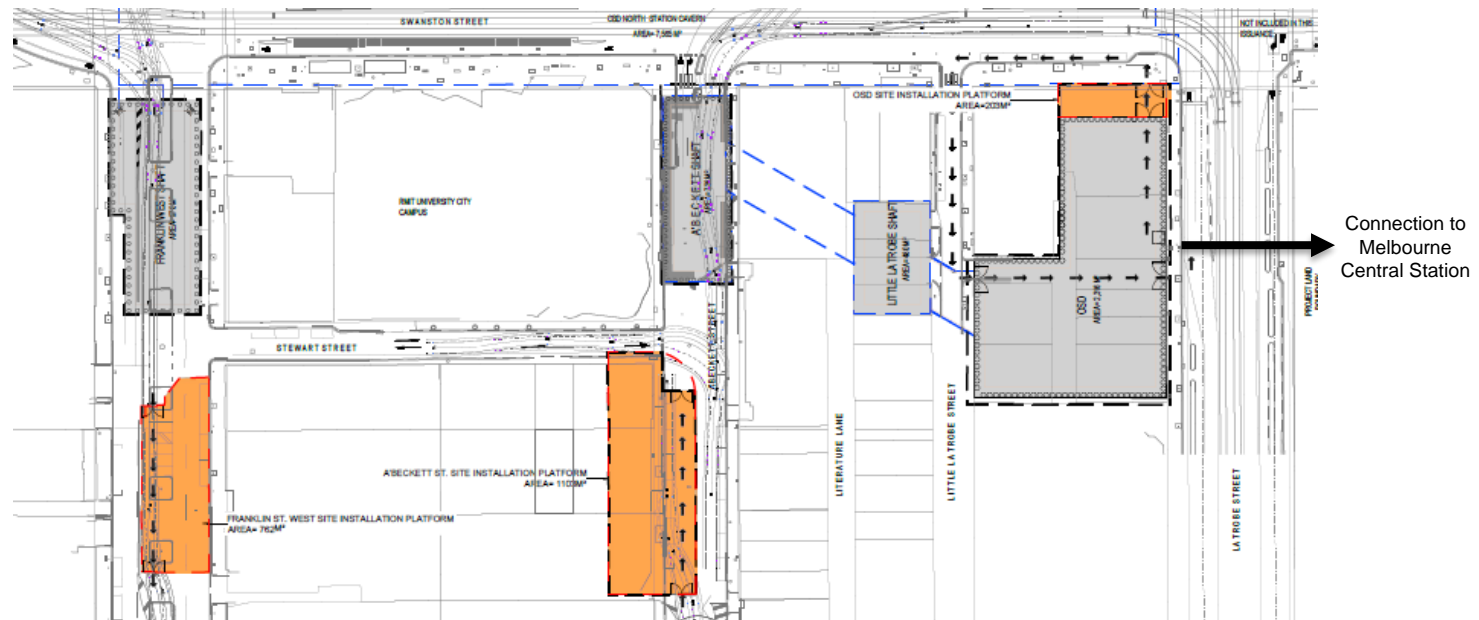
## KEY CONSTRUCTION DATES - DEMOLITION

Station	Site	Indicative Start
Town Hall Station	Federation Square site	September 2018
State Library Station	Little La Trobe site	Mid-2018

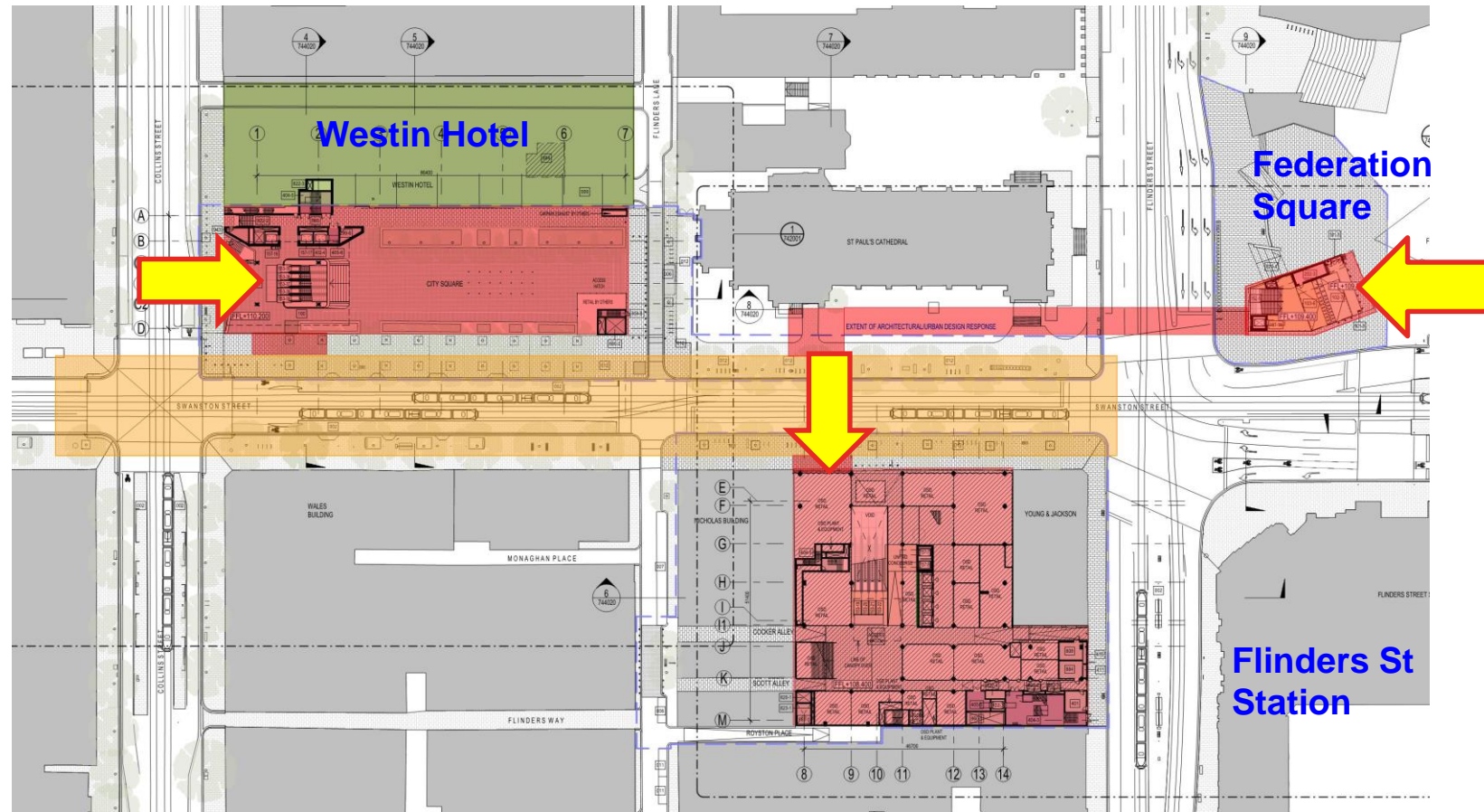
## KEY CONSTRUCTION DATES – EXCAVATION & TUNNELLING

Station	Site	Indicative Start
Town Hall Station	City Square site	Mid-2019
	Federation Square site	Mid-2019
	Flinders Quarter site	Mid-2019
State Library Station	La Trobe Street site	Late 2018
	Little La Trobe site	Mid-2019
	Franklin Street West site	Start 2019
	Franklin Street East site	End 2018
	A'Beckett Street site	End 2018

# SITE LAYOUT WEST OF SWANSTON STREET



# TOWN HALL STATION PEDESTRIAN ACCESS

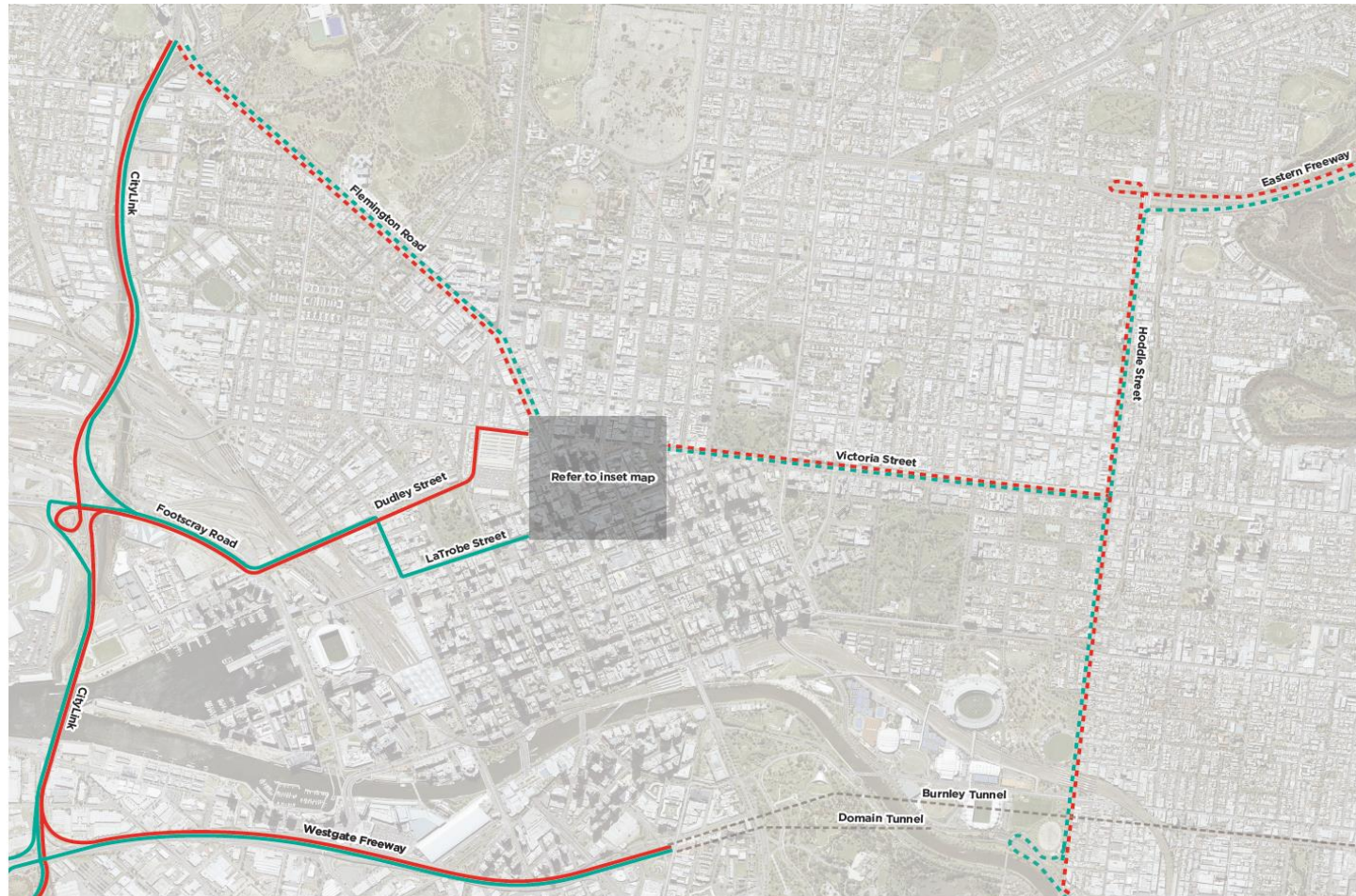


# Truck routes



Cross  
Yarra  
Partnership

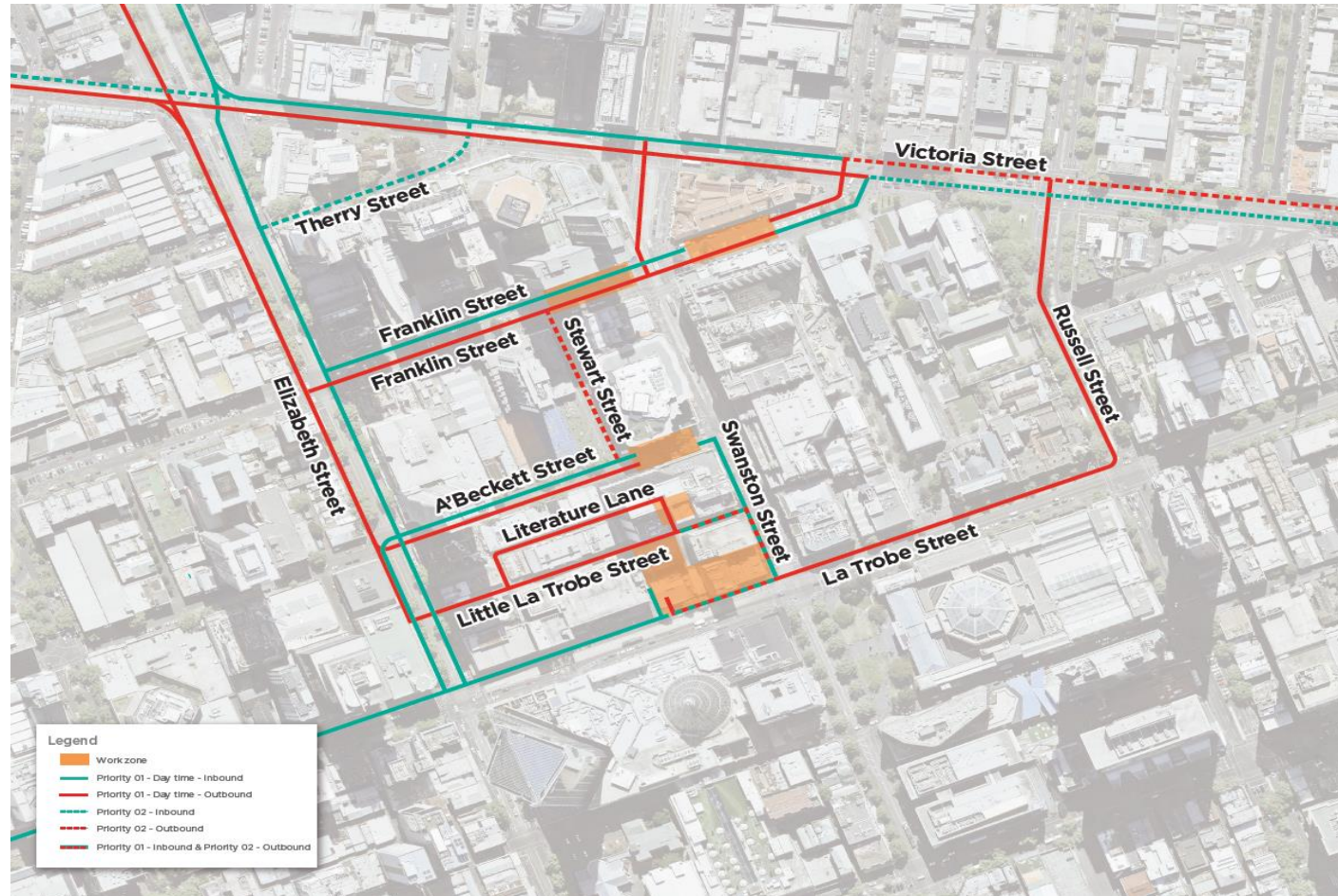
# CBD NORTH



Indicative only, subject to ongoing planning and review



# CBD NORTH



Indicative only, subject to ongoing planning and review

# CBD SOUTH



Indicative only, subject to ongoing planning and review

# Archaeological investigations



Cross  
Yarra  
Partnership



## The Heritage Act 2017

**In Victoria it is an offence to disturb any historical archaeological site, unless *Consent* has been obtained from the Executive Director, Heritage Victoria (section 123).**

**An “archaeological site” means a place which:**

- Contains an artefact, deposit or features which is more than 75 years old
- Provides information of past activity in the State
- Requires archaeological methods to reveal information about the settlement, development or use of the place
- Is not associated only with the Aboriginal occupation of the place.



### **La Trobe Street:**

- Single-storey stone buildings (shops and warehouses); merchants, butchers, fishmongers, carpenters and printers
- Forge (1868) Bowden Brothers
- Light industry in 20<sup>th</sup> century
- Very little sub-surface disturbance (confirmed by preliminary work).

### **Swanston Street**

- Some hotels (Freemasons, Beehive, Gippsland)
- Other businesses – tobacconists, grocers, small warehouses
- 2 storey, brick and stone
- Moderate sub-surface disturbance





# Truck safety and management



Cross  
Yarra  
Partnership



# TRANSPORT MANAGEMENT PHILOSOPHIES

- Incorporate all PS&TR requirements and EPR's in everything we do
- Minimising disruption
- Safety for all - separation of public space and construction areas
- Amenity and confidence in personal safety
- All transport modes incorporated - focus on modal priorities
- Keeping Melbourne moving – e.g. Emergency services, building services, deliveries, private access, other construction projects
- Smooth integration and change over from EWMC traffic management
- Focus on truck heavy haulage routes, impacts and mitigations
- Early notification and communication to ensure no surprises
- Major and minor events to be considered and catered for





# TRANSPORT MANAGEMENT

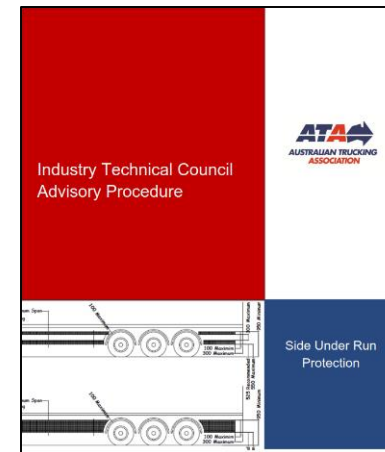
## **Compliance to Environmental Performance Requirements**

- Where practicable select traffic routes to prioritise routes with existing heavy vehicle usage where possible and avoid local roads
- Monitor construction vehicle driver behaviour
- Identify locations for trucks to idle pending arrival at construction sites
- Minimise the need for trucks to reverse and require and require the use of broadband reverse alarms
- Management of workforce parking
- Prepare and implement a Spoil Management Plan

# VULNERABLE ROAD USER PROGRAMME

## State Government led working group

- Side under-run protection
- Blind spot elimination – front / sides / rear
- Audible left turn alert (once developed)
- Vehicle signage
- Driver training: under development by Amy Gillet Foundation
- Cycling groups engagement



# VULNERABLE ROAD USER PROGRAMME



# Environmental monitoring and modelling



Cross  
Yarra  
Partnership

# Property Condition Surveys

- Identify properties with CYP works zone of influence:
  - may experience vibration
  - may experience minor ground settlement
- Identify and contact building and asset owners
- Completes a visual inspection. Identify and record any existing defects
- Resulting report will be sent to owner, detailed discussion with the owner if required → final copy issued
- Heritage/significant buildings – further investigation may be required
- Feed investigations and site inspections into CYP modelling to inform our design process
- Dedicated full-time survey team for ongoing management and assistance during construction



# Ground Movement

- EPRs: GM1-6
- Extensive modelling
  - Methodology
  - Plant & equipment
  - Design changes
- Property condition surveys
- Mitigation prior to and during excavations
  - Extensive real-time monitoring
  - Plant and equipment methodology
  - Site controls
  - Design



## Noise & Vibration

- EPRs Noise and Vibration (NV1-21)
- Planning and modelling currently being undertaken
- Detailed plant and equipment noise assessments for:
  - Airborne noise
  - Ground-borne noise
  - Vibration
- Real-time monitoring will be undertaken during early construction stages and beyond
- Mitigation measures include:
  - Scheduling of activities
  - Plant and equipment selection
  - Source controls



# Air Quality



- EPRs: AQ1-3
- Assessments currently being undertaken
  - Plant and equipment used
  - Work areas including materials and types of excavation
  - Small, localised areas of work
- Control measures include
  - Plant and equipment selection
  - Air quality controls at the source
  - Water suppression
  - Acoustic sheds designed for emission control



## Real Time Monitoring

- Significant monitoring program
  - Air
  - Noise & Vibration
  - Groundwater
  - Ground Movement
- Real-time results
  - Fixed full-time locations
  - Spot measurements
  - Modelling program
- Full-time dedicated resources
- Real-time system for project

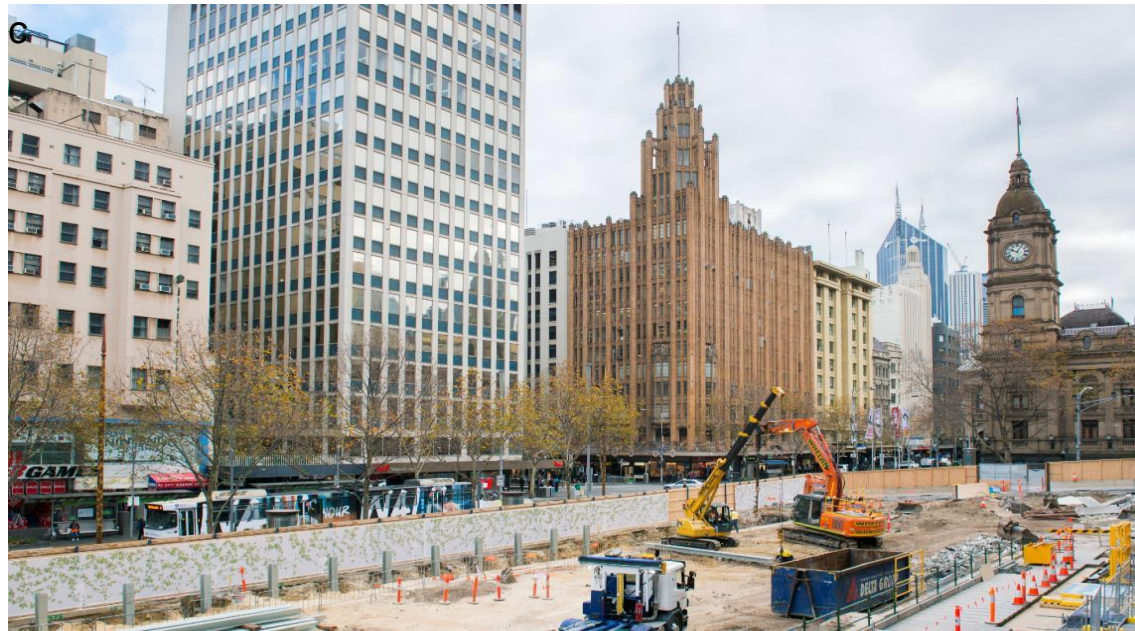


# Business support



Cross  
Yarra  
Partnership

# METRO TUNNEL APPROACH – NOT A ‘BUSINESS AS USUAL’ APPROACH





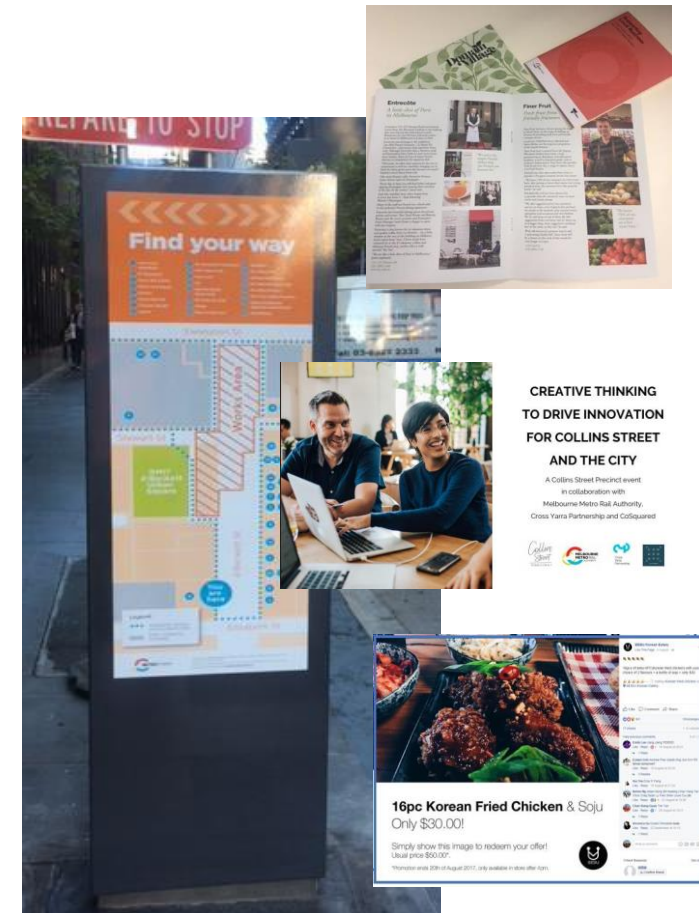
## SUPPORTING BUSINESSES

- MMRA and appointed contractors working with businesses to assess how works may impact them and identify **options for assistance**
- **Business Support Guidelines for Construction (BSGC)** approved by Minister for Planning as part of Environment Effects Statement
- **Exploring innovative ways to ensure Melbourne's CBD remains an attractive destination for shopping, events and tourism**
- Work already been done to **reduce potential impacts** ie: construction methodology for CBD stations

# SUPPORTING BUSINESSES

Range of **business support measures** include:

- ✓ Marketing and promotion (vouchers etc)
- ✓ Wayfinding and signage
- ✓ Leveraging existing events
- ✓ Creating local activation opportunities
- ✓ Using construction infrastructure to create focal points
- ✓ Upskilling businesses – promote resilience
- ✓ Regular, ongoing communications
- ✓ Precinct and individual business action plans



# BUSINESS ENGAGEMENT TO DATE

- 580 businesses engaged to date (most in CoM)
- 130 business support measures implemented
- 6 businesses assisted by Small Business Mentoring Service
- 2 new trader associations in development



# OUR ROLES

MMRA ROLE	CYP ROLE
<ul style="list-style-type: none"><li>• Ensure Metro Tunnel is delivered while keeping Melbourne moving</li><li>• Set strategic framework for business disruption management and support (BSGC)</li><li>• Strategic relationship with industry sectors – local government, tourism, property etc</li><li>• Key relationships with business associations</li><li>• Ensure CYP and other appointed contractors appropriately manage business disruption and deliver support measures under the BSGC &amp; EPRs</li><li>• Digital/online promotion</li><li>• Escalation point for individual business and associations</li></ul>	<ul style="list-style-type: none"><li>• Ensure business disruption relating to Metro Tunnel construction is appropriately managed</li><li>• Day to day relationship with individual businesses</li><li>• Manage business operational issues</li><li>• Deliver support measures under the BSGC</li><li>• Integrate business support with CYP creative program</li><li>• Ensure outcomes consistent with relevant Environmental Performance Requirement (EPR) measures</li><li>• Report back to MMRA</li><li>• Escalate to MMRA when/if required</li></ul>

# METRO TUNNEL CREATIVE PROGRAM AIMS TO...

Keep the city vibrant during construction of the Metro Tunnel







Fabrik Peregrination 2016 (Sarah Crowest)



Moreart 2015 (Larissa MacFarlane)



Moreart 2014 (Sadie Candler)



Fabrik Peregrination 2016 (Sarah Crowest)



Show Court 3, Rod Laver Arena (Louise Paramor)



## COMMISSIONING METHODS

**Direct Commissions** - Direct commissioning of artists, designers or creative collectives

**By Invitation** - Inviting selected artists, designers or creative collectives to respond to project briefs

**Collaborations/Partnerships** - Creative partnerships with a wide range of Melbourne's cultural organisations including Museums, Galleries, Universities, community groups etc

**Community Based Projects** - Working with community groups to develop site specific creative content.

**EOIs** - Expression of interest submissions - open to creative industries, community groups, general public etc

**Incoming Proposals** - unsolicited, incoming proposals from individuals or groups

**Opens Calls** - Open call initiatives are open to the public and anyone can submit a response to these project briefs



The Space Agency

## ELIZABETH STREET POP UP PARK

CITY OF MELBOURNE // 2017-2018

The Space Agency has been engaged by the City of Melbourne to implement and manage a pop-up park on the corner of Elizabeth Street and Flinders Street. Part traffic management experiment, part community engagement tactic, part greening the city intervention - the park has been active all summer and highly utilised by workers, locals and visitors alike. With significant social issues such as homelessness, drugs and violence present in this part of the city, the park has also been a catalyst for highlighting areas of focus, and we have had to work closely with the City of Melbourne and the Victorian Police to ensure the park remains safe and successful.

### KEY OUTCOMES

- Successful shut-down of Elizabeth Street Corner, proving this can be achieved long-term without greatly impacting traffic flow
- Increase green and recreational space for the City
- High utilisation of park by workers, locals and visitors
- Positive feedback from local community and visitors
- Strong traction online and on social media





The Space Agency

# TRANSFORMING SOUTHBANK BOULEVARD

CITY OF MELBOURNE // 2016-2017

The Space Agency has been working with the City of Melbourne to plan for the future of Southbank and create a new urban greenspace through the centre of Melbourne's iconic arts precinct. The Space Agency designed and implemented an experiential community engagement program in late 2015 to support Council with its Phase 1 consultation. The engagement included activations in the lobbies of the area's cultural institutions, pop up consultations across Southbank and a one day street party, taking over Southbank Boulevard to replicate what the new green space might look like.

### KEY OUTCOMES

- Close to 1000 people participated in the community engagement, contributing their ideas and recommendations through the City of Melbourne's digital engagement portal.
- Over 1400 people attended a one day street party in which 5 different park formats were prototyped.
- The Space Agency has gone on to support the City of Melbourne on a broad range of engagements following the success of this co-operation, including on Phase 2 and 3 community engagement for Southbank Boulevard.



# Questions



Cross  
Yarra  
Partnership